



Inside



Flying the flag for Kapa Haka. Page 5



Accident at Te Kiri. Page 6



Pouakai Hut extended to accommodate popular walk. Page 7.



Taranaki Regional Council elects new Chair, page 9.



100 year old house new on the market. Pages 10,11



Kapuni Hall reopens after fire. Page 15.

High School celebrates a hundred years

Opunakē High School celebrates 100 years. Opunakē High School is set to celebrate its centennial over Taranaki Anniversary weekend, 7-9 March 2025.

The school has a massive weekend in store to celebrate the significant milestone, with a powhiri on Friday 7 March opening the celebration and welcoming home hundreds of past & present students, teachers and community members.

Attendees are travelling from all over to attend the events with some coming from as far as China, Canada & Australia to be involved and reconnect with Opunakē High School.

Whilst the evening events are ticketed, the Centennial Gala day on Saturday 8th March is one where the school hopes to see the whole community get involved with.

Running between 10am-2pm, the festivities include a jam packed programme featuring auctions, raffles, live music, hangi & food stalls, school tours, decade photos and current versus past student sports matches. Payment for gala stalls and activities will be via gala token only, which can be purchased from the school hall on the day.

For the full Centenary weekend details please head to the school website: www.opunake.school.nz/centennial/

Comments: Opunakē High School principal Andrea Hooper Carr:

“For the last century Opunakē High School has been expanding minds, developing skills, offering experiences and opening doors for the young people of our community. In short, growing good people who have gone on to change the face of Aotearoa.”

“It is inspiring and heartwarming, that now in 2025, we can celebrate this milestone achievement together,” she says.

“Opunakē High School has been built on the shoulders of legends; academics, sporting stars, cultural ambassadors, movers and shakers in society. And it is awe inspiring to have all these legends together in one place, at one time, reconnecting in the school

that they call their own: Opunakē High School.”

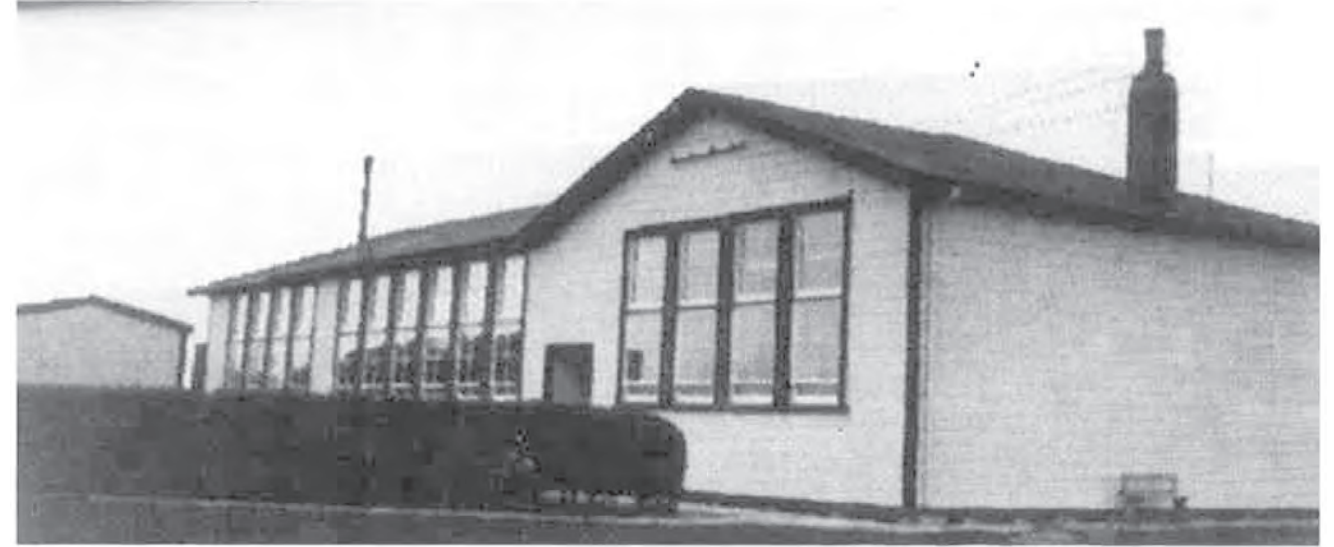
So enjoy the memories, reminisce on old friends, teachers and times gone by, and let’s celebrate together the last 100 years, and anticipate with hope and optimism the next 100, invites Andrea.

Centenary Event Manager and former student Tara Fevre (Potter) reflects

“The essence of the place for me has always been the people. A strong community, deeply passionate, and caring too. Twelve years on, it is lovely to reconnect; where many of

thefriendly faces from my time at school still remain. “It is a privilege to be involved in organizing the Centenary Celebration and I hope all who participate have a wonderful time reconnecting and reliving memories.”

Continued page 3



Opunake High School building in earlier years.



SECONDARY DEPARTMENT, 1934

Back Row: J. Priest, H. Symons, J. Hickey, C. Connell, E. Hill, M. Fraser, J. Wan, L. Clegg, J. Allan, P. Smith, B. Callender
Second Row: K. Riley, N. Campbell, M. Roach, K. Hurley, N. Olliver, B. Olliver, D. Smith, B. Beetham, L. Hughson, I. Richards, M. Coad
Third Row: S. Julian, C. Campbell, R. Clegg, R. Sharrock, F. Webb, C. Wells, W. Hughes, T. Clouston
Front Row: L. Armstrong, N. DesForges, S. Davey, G. Byars, R. Humphries, V. Elgar

25% OFF HEAT PUMPS*








Sinclair
Electrical & Refrigeration

FREE QUOTE CALL
06 761 8084

*Applies to Daikin, Panasonic and Mitsubishi heat pumps 01/03/25-31/03/25






Letters to the Editor

Send your your views to: Letters to the Editor
23 Napier Street, Opunake.
email: editorial@opunakecoastalnews.co.nz
You are welcome to use a pseudonym but must supply your name and address to us.

“Let’s create your business growth strategy together”
Your only local community accounting firm



Accounting for the future, today

Hawera - Opunake - Patea - 06 278 4169
Opunake Office hours:
Mon, Wed & Thurs: 9am-3pm



POWER SUPPLY Rural & Residential

Design, upgrade and repair
overhead and underground
power supplies

- Powerco Approved Contractor
- Network connections
- Powerline maintenance
- Vegetation control around powerlines
- Fault repair
- Specialists in rural power servicing and installation
- High voltage installation
- Street lighting design and installation
- Underground utility detection

0800 877 746

powerworx@obertech.co.nz



OPUNAKE & COASTAL NEWS

Registered office: 23 Napier Street, PO Box 74, Opunake
Phone: Office (06) 761-7016, A/h (06) 761-8206

For advertising, email: ads@opunakecoastalnews.co.nz
For editorial, email: editorial@opunakecoastalnews.co.nz
For accounts, email: accounts@opunakecoastalnews.co.nz

www.opunakecoastalnews.co.nz

Editor: Bernice McKellar

Journalists/Sales: Rolland McKellar, Bryan Kirk

Advertising/Production: Vanessa Smith

Production/IT: Shane Butler

Delivery: Thursday, fortnightly

Registered as a newspaper.

Member of the Community Newspapers Association of New Zealand



The Opunake and Coastal News is distributed free to every home and business within the rural area bounded in the north by the New Plymouth city border, extending east to Egmont Village, and around to the edge of Stratford, south to the Hawera city border and inland to Kaponga and through Eltham.

While we welcome free speech, the views expressed in the Letters to the Editor do not necessarily reflect those of the Opunake & Coastal News. Please limit letters to 350 words as we sometimes struggle for space to fit them all in.

Homelessness in New Zealand

The effects of homelessness on our economy are very real.

In the census from 2018/2023, the homeless population increased by 13,000 and now totals 102,123 - the key factors being the serious lack of social and affordable housing.

Most at risk are those with mental health issues, alcohol and drug addictions, home violence, unemployment... the list goes on.

Doctor Neville Pierce, an Otago University Researcher, has estimated the cost to New Zealand taxpayers to be around \$65,000 annually for every homeless person. These costs include healthcare,

indebtedness, and time in court and prison. This totals some \$6.6 billion dollars annually.

Our solution would be to build 44,200 two-bedroom affordable units at \$150,000 per unit. This would create accommodation at reasonable and affordable rents for 89,000 people who are suffering. But most importantly it would reduce the \$6.6 billion including the \$30,000,000 rental supplement paid out weekly by the Government.

I would like to see councils within the Taranaki region taking responsibility to initiate and prioritise the construction of affordable two-bedroom units .

Feedback from Councillors and board members in particular regarding housing would be greatly appreciated.

Fred Kumeroa

ADELPHOS

Last year a friend took me for a demonstration spin in his Tesla. On an isolated and straight Stratford Road we rocketed from 0-100 km in 5.5 seconds. It then effortlessly negotiated corners with foot-free braking as my disbelieving heart pounded. Although the attractive exterior body of a car might influence a purchaser’s decision, the engine’s reliability is truly the heart of a motor vehicle.

Here’s a story about a young man’s heart, whose body didn’t seem impressive. Most people heard the story of a young lad named David who defeated the giant Goliath against all odds. One day David’s father Jesse had to decide who would

be the future king of Israel that the prophet Samuel would anoint. The proud dad lined up six handsome, hardened and strapping sons for Samuel to pick from. Samuel wasn’t impressed with any of them. He asked if there was another son. That son was David, Jesse’s youngest—a youthful shepherd boy caring for his father’s sheep. The LORD spoke to Samuel about David saying, “The LORD does not look at the things people look at. People look at the outward appearance, but the LORD looks at the heart” (1 Samuel 16:7, NIV). David was anointed as King because God looked at David’s heart, not his outward appearance.

The Heart of the Matter

In the King James Bible the word heart is used over 800 times, but mostly spiritually and figuratively. God’s truths are received primarily through our hearts; our physical brain acts as a free-will cognitive filter. “If you declare with your mouth Jesus is Lord and believe with your heart that God raised Him from the dead you shall be saved” (Romans 10:9-10). Jesus tells us that the good and bad things we say originate in our hearts and merely exit from our mouths (Matthew 15:18).

In the Bible receiving a new heart implies a change with new attitudes and behaviours, leaving the old ones behind (2 Corinthians

5:17). The new heart becomes a Christian’s spiritual motor. He/she then co-journeys through life being fed and guided through the written Word and prayer. Without teaching from the Bible and prayer Christianity is like admiring a beautiful car chassis minus its heart—the motor.

Ian McAlpine
New Plymouth

Aotearoa is not Little America

As I wander through Ngāmotu’s CBD, which resembles Little America with hundreds of American flags and banners hanging from posts, shops and cafes in preparation for the

Continued on page 3.

Vehicle Valet Service

PICKERING MOTORS LTD
OPUNAKE



COST: \$85.00 per hour incl g.s.t.

Bookings available Tuesdays and other days on request.
Car can be picked up and dropped off for small fee.
Vouchers available.

CONTACT:

Pickering Motors Office on:
06 761 8363 | 0800 22 11 20
Ask for Tracey or Linda

IHAIA MOTORS

for
A GRADE REPAIRS

- Tyres
- Batteries
- Lubes
- W.O.F
- Panel beating
- Painting
- Farm Bikes
- LPG
- All mechanical repairs
- Insurance work
- Radar Detectors

AT COMPETITIVE PRICES.

Tasman St, Opunake
Ph (06) 761-8502



Letters to the Editor

Continued from page 2.

Americana event, it is a reminder that Aotearoa's once independent foreign policy appears to have been hijacked by the USA. This is clearly demonstrated by our failure to join 79 other countries in their condemnation of USA sanctions on the ICC, which were intended to discredit and dilute the authority of the court that we publicly and unequivocally uphold as a pillar of International law. <https://www.aljazeera.com/news/2025/2/7/countries-unite-against-trump-sanctions-on-international-criminal-court>

It appears New Zealand's approach to foreign policy, once based on rules and principles that honoured our obligations to international law has now been usurped by geopolitical interests and a sycophantic desire for closer alignment with the USA. This submissive stance is perfectly illustrated by our refusal to condemn Trump's outrageous plan to ethnically

cleanse Palestinians from Gaza (and turn it into real estate fantasy).

There has been no condemnation of Israel over the last 16 months for its war crimes and crimes against humanity nor has there been any criticism of the USA who has not only given Israel the green light to commit genocide but has armed them to do so.

The International Court of Justice, which our government strongly supports, has ruled that the Israeli occupation of the Occupied Palestinian territory is illegal and that states have an obligation not to aid or assist in any way, which includes investments in companies involved in the building or maintaining of these illegal settlements.

Right here in Ngāmotu – where I see red, white and blue – our local council is investing through their Perpetual Investment Fund in eight companies on the United Nations Human Rights Council list involved in the illegal occupation and

settlements.

Despite central and local governments' moral and legal responsibility to uphold international law, we seem to be following our allies, particularly the USA, down a lawless path.

The principle of partnership and mutual respect embodied in Te Tiriti can and should be a foundation for how Aotearoa conducts its foreign policy, an approach outlined by previous foreign minister Nanaia Mahuta. Values based on human rights, good will and environmental protection need to take precedence over geopolitical interests and misplaced loyalty to allies.

Kate Cole
Ngāmotu New Plymouth

Gaza

Just in case the reader thought 'it was over' in Palestine, a reminder of what normalising Genocide looks like: the statement of intent by IDF to ethnically cleanse Gaza as evidence of War Crime: this leaflet dropped by Zionist Israel on Gaza as reported by Owen Jones <https://youtube.com/watch?v=ZhKLxWEGA70>

watch?v=ZhKLxWEGA70

"To the honourable people of Gaza. After the events that took place and the temporary ceasefire and before the start of implementing Trump's compulsory plan, which will force you to be forcibly displaced whether you like it or not, we have decided to address you with a final appeal to anyone who wants us to provide them with assistance and in return agrees to help us, we will not hesitate for a moment to help. Recalculate, the map of the world will not change if all the people of Gaza disappear from existence, and no one will feel you or ask about you. You are left alone in your inevitable fate. Iran cannot protect itself, let alone protect you. You have seen with your own eyes what happened. Neither America nor Europe care about Gaza at all, nor do your Arab countries, which are our allies now and provide us with money, oil and weapons, and they send you shrouds. There is only a little left, and the game is over. And whoever wants to win himself before it is too late, we will remain here until the Day of Resurrection."

Roger Morris.
Oeo.



DALLAS GREEN

Helping Good People find their Way Home

Buying or Selling Let's Work Together

027 448 1841



dallas@robertangus.co.nz
Robert Angus Real Estate Limited
Office: +64 (06) 7582484
Licensed Real Estate Agents REAA 2008



Knit and Sew

Haberdashery, quilting materials and supplies. Wool, patterns and needles. Embroidery and cotton.

Open:
10am-4pm Mon-Friday
10am-12pm Saturday

Phone: 06 765 4181
202 Broadway, Stratford
www.stratfordknitandsew.com

High School celebrates a hundred years

Continued from page 1



Teachers Term I, 1914

Back Row: Mr Hepburn (Hoppy), Mrs Jillet, Mr Jillet, Mr Somerville (Slim), Mr McGaughey (Mac), Mr McLaughland (Headmaster)
Front Row: Mr Gifford (Giffy), Miss Hickey (Francie), Miss Sparks (Sparky), Mr Worthington (Trevor)

REGISTER OF ADMISSION,

18. 3. 25	Brown, Vera, Lybil.	18. 9. 11	A. B. Brown Esq. Opunake.
19. 3. 25	Hepburn, Edna	7. 4. 10	A. Hepburn Esq. Opunake.
20. 3. 25	Gave, Keith Hutton	2. 2. 12.	C. G. Gave Esq. Opunake.
22. 3. 25	Gave, Clement Travers	22. 4. 13.	
20. 3. 25	Smith, Alison Forbes	27. 12. 11	E. B. Smith Esq. Opunake.
22. 3. 25	Newman, Alice Isabel	21. 1. 10	H. J. Newman Esq. Opunake.
24. 3. 25	Geary, Emily Leah	18. 12. 11	J. Geary Esq. Opunake.
27. 3. 25	Pyeroff, Doris	19. 9. 11	W. J. Pyeroff Esq. Opunake.
27. 3. 25	Woodford, John Ambrose	22. 10. 11	C. W. Woodford Esq. Opunake.
28. 3. 25	Leahy, Patrick Anthony	21. 11. 09.	D. T. Leahy Esq. Opunake.
30. 3. 25	Dudley, Walter John	20. 7. 09.	W. J. A. Dudley Esq. Opunake.
30. 3. 25	Groffkey, Frances Josephine	8. 7. 10	Mrs. J. Groffkey, Pehanga.
4. 3. 25	Griffiths, Aletia	18. 8. 11	C. J. Griffiths Esq. Opunake.
26. 3. 25	Simons, Stanley Davis	9. 1. 12.	J. Simons Esq. Puroa O. Puroa.
27. 3. 25	MacLeod, Jack MacLeod	18. 5. 09.	W. S. MacLeod Esq. Raketu.
4. 4. 25	Ware, Alice	10. 11. 10	G. P. Ware Esq. Raketu.
15. 4. 25	MacLeod, Mary	26. 7. 10	W. S. MacLeod Esq. Raketu.
4. 4. 25	Burton, Beatrice Beverley	12. 5. 11.	J. P. Burton Esq. Opunake.
15. 4. 25	Brewer, Henry Francis Babington	18. 12. 10.	H. B. Brewer Esq. Raketu.
15. 4. 25	C. G. Gave, Ernest Thomas	8. 4. 11	S. J. Gave Esq. Puroa.
15. 4. 25	Hughes, Priscilla Grace	3. 4. 10	D. G. Hughes Esq. Te Kiri.
15. 4. 25	Horo, Mary Teuhitakawa	7. 12. 07.	M. Horo Esq. Raketu.
20. 4. 25	Robbin, Arthur	22. 9. 10	
18. 5. 25	Ross, Alfred Alister	19. 8. 11	D. Ross Esq. Opunake.
1. 6. 25	Fleming, Ellen	29. 1. 07.	P. Fleming Esq. Oroua.

The first students to enrol at the high school in Opunake.

We welcome your letters
Please send to
editorial

@opunakecoastalnews.co.nz



12 MONTHS INTEREST FREE*

DOMINATOR

When it comes to protecting your assets and family, you can't buy better than a Dominator garage door.

SERVICE | REPAIRS | INSTALLATIONS | AUTOMATION

CONTACT US FOR A FREE MEASURE & QUOTE

DOMINATOR GARAGE DOORS TARANAKI

contact@dominatornp.co.nz 06 758 3981

*Terms & conditions apply.

HEADSTONES TARANAKI

Taranaki owned and operated

We create all types of new memorial work and restorations, including second inscriptions, repainting and cleaning existing memorials.

We also specialise in unique stone works for special projects.

TINY AUSTIN
021 663 199
tiny@headstonestaranaki.co.nz

CARING FOR YOUR COMMUNITY

INGRAM'S
PROUD TO BE LOCALLY OWNED & OPERATED

PHONE
(06) 278 4786
Bin & Skip Hire

COUNCILLOR'S COMMENT

Mural captures journey through school

Elkay Roofing LIMITED

Liam Kupe

Ph: 0272106939
Email: elkayroofingltd@gmail.com

197 Parihaka Road, Rd35, Pungarehu



An aerial view of the Soldiers Park mural.

Simple But Significant

a simple cremation & burials

Helping Taranaki families with a range of simple, professional funeral services. With affordable caskets, urns & jewellery.

0800 236 236 233 Carrington St New Plymouth
www.asimplecremation.co.nz

A new mural has transformed a wall at Soldiers Park, Eltham. This long-term project started as an idea and gradually took shape until its completion this January during the summer holidays.

The journey began in April 2022 when Steffy Mackay visited Eltham School and with Teacher Fleur Le Bas's help, conducted a survey, asking the youth for their input on what would benefit the town as part of the revitalisation project. Some of their responses to the question, "What do you think an awesome Eltham Town/Community would look like in 2050?" included: "I think it would be colourful with awesome artworks."

"Colourful places and flying stuff (because it will be in the future)."

"I think it should be a bit like we have now but way more flashy."

"Free Town Wifi."

"Colourful paintings / Art."

Their feedback was then presented to the Eltham Kaponga Community Board, setting the project in motion. From this input, two key initiatives emerged: funding for Free WiFi in the CBD, which was completed in May 2023, and a large-scale mural project to bring vibrancy and youth

expression to the town.

To bring the mural concept to life, the Board enlisted E-Town Youth Trust to lead the project, giving local youth the opportunity to shape its design. Through a series of workshops, young participants shared their ideas, initially envisioning a mural that showcased the best aspects of Eltham. As the workshops progressed, the concept evolved into a visual representation of a student's journey through their school years. The mural begins with a child's first day of school at age five and follows their growth, culminating in their graduation from primary school.

Spanning 40 metres between the skatepark and swimming pool at Eltham's

Soldiers Park, the mural is now a vibrant tapestry of colour, reflecting the identities and experiences of Eltham's youth. It incorporates elements of the environment, culture, sports, music, kapa haka, school values, and creativity, all woven together with a harakeke raranga (flax weaving) pattern. The local school motto of, "Learn By Doing, Knowledge is Power" is truly represented within the vibrant Mural.

E-Town Youth Centre Chairperson Steffy Mackay voluntarily worked with local youth, alongside artists Chris Fuller and Fleur Le Bas and Eltham Kaponga Community Board Chair Karen Cave, to design and create this striking mural in

Soldiers Park, Eltham. The project was made possible through funding from South Taranaki Creative Communities, the Eltham Kaponga Community Board, and E-Town Youth Centre. It was supported by the STDC Arts Coordinator Michaela Stoneman, who helped facilitate workshops with E-Town youth to develop the mural's design.

This initiative has not only revitalised a public space but has also given our local youth a voice. Led by young people and brought to life by local artists, the mural has transformed the area creating a striking focal point that represents Eltham through a youth perspective.

Andersons pies and Caterers

CHECK OUT OUR WEBSITE:
www.andersonspies.co.nz

OPENING HOURS
MON TO FRIDAY 6am - 4pm
PH 06 278 5553
sales@andersonspies.co.nz

144 Princes St HAWERA

"best you can buy an Andersons pie"

Looking for new leaders

EmpowerYouth looking for next generation of leaders South Taranaki's Youth Committee EmpowerYouth is looking for the next generation of leaders to represent the District's rangatahi (young people).

Comprising 10-15 like-minded individuals, the committee aims to inspire and connect rangatahi throughout South Taranaki, encouraging them to speak up, voice their opinion, and contribute to the betterment of the District, as well as organise events, participate in community

projects, support the South Taranaki District Council's community events and work closely with schools.

Committee representative Evita Morellon says joining EmpowerYouth is an opportunity for young people to develop their leadership skills and start networking.

"EmpowerYouth is run by youth, for youth. It's a great opportunity to get out there in the community, help run activities and learn new skills. It's a really fun thing," she says.

One of the committee's

most successful campaigns is Let's Get Active, a programme designed to give South Taranaki youth the chance to learn and participate in sporting activities.

"For our next Let's Get Active campaign we are introducing less conventional sports like dance and squash. We have support from local clubs and work with Sport Taranaki to make these happen. It's all about giving young people the opportunity to give new things a try," says Evita.

COMMERCIAL LANDSCAPING EVENT DIY HIRE

100% LOCALLY OWNED & OPERATED
Quality Equipment Hire

06 757 8665 Fitzroy www.tht.co.nz

TOOL HIRE TARANAKI

MATERIAL HANDLING | CONSTRUCTION EQUIPMENT

- RENTAL
- SERVICE
- PARTS
- NEW & USED SALES
- GULF LUBRICANTS

AB EQUIPMENT
29 Hurlstone Drive, New Plymouth
Grant Stachurski - Material Handling & Construction Equipment Sales
grant.stachurski@abequipment.co.nz | 027 227 0397
Ph (06) 757 5197 or 0800 30 30 90
www.abequipment.co.nz

Flying the flag for Te Matatini

They always said that Te Matatini, the National Kapa Haka Festival was going to be big and that Taranaki would be flooded by tens of thousands of visitors. Accommodation is booked up and local businesses have been encouraged to stock up and make the visitors welcome.

In Opunake, the Taranaki Coastal Community Board and Opunake Business Association are getting in on the act and flying the flag for Te Matatini.

On Monday board chair Andy Whitehead and deputy chair Sharlee Mareikura were seen putting up the Tino Rangatiranga Maori Sovereignty flag at the flagpole in front of the Te Kahui o Taranaki Iwi building.

Andy said the board had decided to purchase several of these flags in honour of Te Matatini.

“The Community Board has organised and funded this, and the Council has supported it,” he said.

The flags were bought from local business Country Connections and were being around town.

“I’ve had people say this was the first time they knew we had eight flag poles in



Hoisting the flag. From left. Sharlee Mareikura, Mahuki Mareikura, Andy Whitehead.

town,” said Andy.

He said there has already been a lot of interest in the festival being shown both by people throughout the district and by people from other parts of the country.

There are two groups based in Opunake, with Te Ringa Kaha from Palmerston North staying at the beach and Te Poho o Hinekahakura from West Auckland staying at the Kura.

Sharlee says the visitors who arrived during the weekend have already attracted a lot of interest around town.

“It’s amazing that we’ve got this up and going as much

as they did for Americarna,” she said.

She says every marae and Kura Kaupapa throughout Taranaki have also been hosting visiting groups.

Andy sees the festival

having ongoing benefits for the area.

“Hopefully this will encourage people to come to our beautiful little town,” he said.



Opunakē High School
Te Kura Tuarua o Opunakē

CENTENNIAL GALA

SATURDAY 8TH MARCH | 10AM – 2PM

ART AUCTION

FOOD & DRINK

KAPAHAKA FLASH-MOB

LIVE MUSIC

FUN & GAMES

BOUNCY CASTLE & ZORB BALLS



RAFFLES

SILENT AUCTION

SCHOOL TOURS

DECADE PHOTOS

PRESENT vs PAST STUDENT SPORTS COMP.

GALA USES TOKEN SYSTEM. TOKENS AVAILABLE TO PURCHASE @ SCHOOL OFFICE FROM WED. 5TH MARCH (EFTPOS) | SOME STALLS WITH CASH/EFTPOS SALES



SCHURR IRELAND
CHARTERED ACCOUNTANTS

NEW PLYMOUTH ELTHAM
p. 06 759 0105 p. 06 764 8305

www.schurrireland.co.nz



Cabinet Making, Glass Supplies &
Custom Joinery Solutions

Donald & Ian Murray

06 764 8616 027 242 8379
027 348 9445

136 High Street, Eltham
eltham.bs@gmail.com

www.elthambuildingsuppliers.co.nz



CREATORS OF THE ORIGINAL RANCHSLIDER

Fisher Taranaki

50 Rimu Street, Strandon, New Plymouth

06 758 5068

fisherwindows.co.nz



NEW PLYMOUTH

78 Courtney Street | 06 759 9052

- Online - Deliveries /Click & Collect
- Gold Card Discounts - on Groc's Tuesday!
- Instore Cafe!
- Fresh, Fresh, Fresh
- Fuel station on-site



We're here to help make your shopping
experience a great one!
COME IN & SAY HELLO!



Johnny the Grocer & Christine NEW OWNERS



Two people were taken to Taranaki Base Hospital with moderate injuries after an accident that closed Wiremu Road.

Monday morning crash closes road

A section of Wiremu Road at Te Kiri was closed on Monday morning after a two-vehicle accident.

A police spokesperson says they were told of a two-

vehicle crash at 8.20am.

A FENZ spokesperson says the incident was attended by two fire engines and support vehicle from the Opunake brigade, and one fire engine

and support vehicle from the Kaponga Brigade.

A Hato Hone St John spokesperson says two of their vehicles attended the incident. They treated two

patients who were transported to Taranaki Base Hospital with moderate injuries.

Police are making enquiries into the circumstances of the crash.

Reflecting on the Pouakai tarns

I went for a trek in the Te Papakura o Taranaki, for those who haven't caught up yet, it means the Egmont National Park, several days after the Maunga Taranaki-Mt Taranaki was made a person.

As I walked up the Mangorei Track to the Pouakai Tarns, on the way I met other park-users from around the world. There were approximately two hundred and fifty people, which included one hundred and sixty six who were female. During the 6km uphill walk one way, I walked the 4100 wooden steps. Most of the people had accents from India, China, Japan, USA, Germany, Belgium, you name it they were there, even a half a dozen locals. When I spoke to them, some happy to have a rest, I asked them what did they know about Maunga Taranaki now



The Pouakai Tarns.

Photo: Ian McAlpine

being a real person status mea. None of them knew of it. I asked myself why with such a huge change there were no either Department of

Conservation staff or Maori folk out on such a popular track as the Mangorei Track informing the park-users of this new process in the park.

He waka eke noa-We are all in this together.'

Ian McAlpine



HAWERA GLASS AND PANEL LTD

FOR ALL YOUR AUTOMOTIVE REQUIREMENTS

WINDSCREEN AND CHIP REPAIRS
PANELBEATING INSURANCE AND PRIVATE
TINTING VEHICLES - HOUSES- COMMERCIAL BUILDINGS
RADIATOR REPAIRS

23 Princes Street
Ph 06 278 5628

info@haweraglasspanel.co.nz



AUTHORISED DEALER

Pouakai Hut rebuild progressing

The Pouakai Hut rebuild is progressing, says Ian McAlpine who has been visiting the site recently on several occasions.

Leading the building crew, Mike Johns on his second last visit on February 4 said he was very impressed with how the project was going with the iron for the main floor about to be flown up to the site. Park-users heading up there over the summer months need to be aware there are no drinking water facilities at the Pouakai Hut site and people must bring water from New Plymouth as water supplies will become very short at the Mangorei Road Carpark before they take on the 6km uphill trek, which has 4,100 wooden steps between the road end and the tarns.

Visitors to the Pouakai Tarns should also be aware of



Extensive renovations to the Pouakai Hut being made.

Photo: Ian McAlpine

the risks regarding drinking the water from the Pouakai Tarns waters.



The hut when finished will cater to more people on the increasingly popular mountain walks.

Photo: Ian McAlpine

Headstone Warehouse
WHERE YOU GO FOR HEADSTONES

33 High Street,
HAWERA - Ph: 06 278 5518

209 Coronation Ave,
NEW PLYMOUTH - Ph: 06 759 9975

www.HeadstoneWarehouse.co.nz
 EXCEEDING THE STANDARD SINCE 1914

Craig Corrigan ELECTRICAL
 ETEC CLUB OPUNAKE

- All Cowshed Wiring
- Farm Control Systems
- Domestic Wiring
- Electrical Inspections
- Effluent System wiring

Ph: Craig on 027 207 7775
 craigcorriganelectrical@gmail.com

gibsonplumbing LTD.

CERTIFIED
 Plumbing, Gasfitting and
 Drain Laying

Plus! Roofing, Wood Fires and
 other Heating Solutions

06 761 8757 027 445 7164
 gibson.plumbing@xtra.co.nz

essential service from \$2,900

HARDINGS FUNERALS
 because you are at the heart of everything we do
 ph: 06 278 8633
 email: funeraldirector@hardingsfunerals.co.nz

The next issue of the Opunake & Coastal News is coming out on March 13.

Get your copy and adverts in early.

Taranaki's hearing care specialists are open and hear for you!

100% Taranaki
 owned & operated since 1998

At Central Audiology, we are doing everything possible to ensure that our clinics are safe for you. As locals, we really care about our community.

Our services:

- Hearing assessments
- Tinnitus
- Hearing aids
- Wax removal (microsuction)

CALL US: 0800 751 000
 Stratford c/o Avon Medical Centre
 Hawera cnr Victoria & High St
 New Plymouth 20 Robe St

Central Audiology
 TARANAKI

A point of difference—that’s the difference

Our government is fully committed to rebuilding the country, and I firmly believe we can do it. The real challenge we face is convincing you that we can. One of the key principles that is frequently overlooked is that economic growth serves as the foundation for national progress. When we prioritise and effectively manage the economy,

all other aspects of our society—such as welfare, education, and healthcare—will naturally improve, allowing us to return to an upward trajectory. We know people are doing it tough. We know that unemployment is rising and although interest rates are falling and inflation is now within an acceptable range the cost of living is still

pinching. We are working hard to bring down costs, remove red tape and improve the lives of all Kiwis. What sets us apart from previous administrations is that we have a well-documented plan, the Q1 Action Plan; signifying a government that thinks differently and is determined to make a positive difference for New Zealand. The Government’s website, beehive.govt.nz, and my office can provide you with ample information so that you can explore and understand our goals. It is a clear and actionable roadmap consisting of 40 bold and targeted actions specifically aimed at boosting investment, addressing the housing crisis, strengthening education systems, improving healthcare access, and restoring public safety across all communities. Cabinet will be responsible for taking decisions on the major legislative architecture

for the Government’s replacement of the Resource Management Act. Likewise they will take decisions on the new national direction for freshwater and pragmatic rules for on-farm water storage and vegetable growing and on a system design for simplified Freshwater Farm Plans. These actions, just a handful of the 40 listed, will make a tangible difference to many people in my electorate and across the country. Our Q1 Action Plan is not only detailed but also easily accessible. The Government’s website, beehive.govt.nz, and my office can provide you with ample information so that you can explore and understand our goals.

*Barbara Kuriger
MP for Taranaki—King Country.*



Barbara Kuriger MP



DP PLUMBING

Craftsman Plumber/ Drainlayer
Living locally in Okato

23 years experience

Competitive quotes and prompt service

Ph Duane on
021 023 05021

SEYMOUR WINDOWS & DOORS



FOR ALL YOUR ALUMINIUM JOINERY NEEDS - NEW BUILDS, RENOVATIONS, INSERT JOINERY, RETROFIT DOUBLE GLAZING, RESIDENTIAL AND COMMERCIAL

3 Sunley St, Borrell Park, New Plymouth
06 753 6910 | info@swd.nz | www.swd.nz

ECAN fails to provide water testing

Greenpeace Aotearoa say they are shocked by the decision by Environment Canterbury to not provide free water testing for rural communities impacted by nitrate contamination. ECan voted in favour of running region-wide awareness communication campaigns for private well owners on water quality risks and commissioning a pilot study to test a number of private drinking water bores for nitrate and E. coli in high-risk areas. However, they stopped short of running region-wide water testing events for private well owners, claiming this would be too

costly - a claim Greenpeace disputes. Greenpeace spokesperson Will Appelbe says “It is disgraceful to see that Environment Canterbury will not be providing free water testing to rural communities. Instead, it is leaving them to pay the price of ECan’s failure to regulate the intensive dairy industry, Canterbury’s primary source of water pollution at the source.” “Safe, healthy drinking water is a fundamental human right, yet Canterbury is the hotspot for drinking water contamination in Aotearoa. “While it’s good to see ECan

paying more attention to the issue of drinking water quality, a communications campaign and pilot study is simply not good enough. People across Canterbury are already experiencing

high levels of nitrate in their drinking water, and they deserve to know whether the water coming out of their kitchen tap is safe to drink.”

Politicians getting run over by Big Road

Road lobbyists often use the same tactics as tobacco, alcohol and fossil fuel industries to influence government policies and media narratives to suit their commercial interests. New Zealand researchers found that groups such as the AA and the Motor Industry Association often frame investments in public transit and cycling as costly, inefficient, and

restricting individual choice, while rarely mentioning their benefits to public health and climate. When it came to road injuries, industry groups cited a lack of spending on road infrastructure as a key cause of harm but downplayed the effectiveness of policies such as lower speed limits or fewer vehicles. *Journal of Transport & Health*

Your Taranaki MPs are here to help you.

Barbara Kuriger MP for Taranaki-King Country

barbara.kurigermp@parliament.govt.nz
barbarakuriger.national.org.nz/



David MacLeod MP for New Plymouth

david.macleodmp@parliament.govt.nz
www.national.org.nz/davidmacleod



Carl Bates MP for Whanganui

Whanganui • South Taranaki • Stratford
carl.batesmp@parliament.govt.nz • www.national.org.nz/carlbates



You can **rely on us** for your energy needs www.rockgastaranaki.co.nz

Transform your home - all your hot water, space heating and cooking needs from your trusted local Rockgas supplier.

Count on us - reliable delivery of 45kg LPG cylinders to your home, business, or farm where ever you live.

Locally operated and proud to be part of your community

rockgas TARANAKI

Call Rockgas Taranaki
0800 LPG 2 YOU or 06 757 9264

The science of deep sea mining

Researchers around the world are racing to get a fuller picture of the ecological impacts of mining the deep seabeds of the Pacific Ocean for valuable minerals. What's been done and what do we know so far? Deep sea mining involves removing potato-sized "nodules" from the bottom of the ocean floor. These modules are full of metals, like cobalt and nickel, which are essential for electric vehicle batteries and other green technologies. Professor James J. Bell,

Professor of Marine Biology, Victoria University of Wellington, comments: "Aside from the physical impacts of habitat removal, one of the key areas of research has been understanding the effects of plumes generated by mining activities. There is much debate about how far these plumes may travel and what impacts they may have on marine organisms. "Recent studies have shown that plumes generated from simulated mining activities can travel several

kilometres from the mining site, forming dense clouds of sediment in the water that eventually settle back onto the seafloor. For example, a recent study by the multi-institutional European project MiningImpact in the Clarion-Clipperton Zone (CCZ)—a nodule-rich area between Hawaii and Mexico—found that plumes could travel up to 4 km from mining sites. Even more concerning was the high level of sediment deposition over the seabed within 100 meters of the mining site,

where essentially all nodules and associated organisms were killed. "This study has also been monitoring the recovery of these areas over several years, but little recovery has been observed. These findings highlight concerns about the long-term impacts of deep-sea mining, as we have limited long-term data to predict what recovery might look like. However, the DIS-turbance and re-COL-onization (DISCOL) experiment, conducted in 1989, may offer some insights. This study initially monitored the impacts of a simulated seabed disturbance for only a few years, but when researchers returned 26 years later, the scars from the mining were still evident—underscoring the potential long-term impacts of deep-sea mining." "Deep-sea environments are, by their very nature, extremely difficult to access. This is partly why we know far less about them compared to most other marine ecosystems—and even less about how they will be impacted by mining activities. Accessing these deep-water environments is very expensive and requires manned submersibles, Remotely Operated Vehicles (ROVs), or Autonomous Underwater Vehicles (AUVs). Operating these machines generally requires large vessels and extensive support systems, which means there are few studies directly examining the impacts of deep-sea mining. "In addition, it is very difficult to bring many deep-sea organisms to the surface. They are adapted to the high pressures of deep water and may not function properly at surface pressures unless kept

in a pressurized chamber. This makes laboratory studies on plume impacts particularly challenging."

New chair for TRC

Craig Williamson is the new chair of Taranaki Regional Council.

Councillors unanimously elected Mr Williamson to replace Charlotte Littlewood, who recently announced her resignation as chair. He took over with immediate effect.

Mr Williamson has been a councillor for almost 15 years and represents the New Plymouth Constituency.

He says it is a privilege to take on the role of chair.

"I look forward to leading the Council as we build on the progress of the last couple of years. My focus will be on continuing the kaupapa and ensuring we work together to deliver the best possible outcomes for our community."

South Taranaki Constituency councillor Neil Walker



Craig Williamson.

remains deputy chair, while local body elections on 11 Mrs Littlewood will stay on as a councillor until the next October 2025.

Benefits of high protein diet

New Zealand and international researchers have found that babies born very preterm who were given a higher protein diet early in life had more mature brains at age seven than those who had been

on lower protein diets. They looked at almost 100 babies, of whom just under 60% were on high protein diets. The researchers say these results suggest higher protein intake in early life promotes brain maturation in

a way that is still observable at seven years old, and that their findings contribute to the ongoing evaluation of optimal nutrition for very preterm bubs.

JAMA Network Open

HTG CONSTRUCTION

📧 Hakatea@htgconstruction.org

027 904 9796

- New Builds
- Renovations
- Extensions
- Decks
- Fences

LICENSED BUILDING PRACTITIONER

Facebook Instagram

Are you looking for care or support in your own home?

Cherish RESPITE
In Home Care

Some of our services include:

- Convalescing
- Post operative support
- End of life care
- Companionship
- Dementia aid
- Post natal support

~ NO REFERRALS REQUIRED ~

We tailor our services to meet your needs - contact Milly Carr
Phone: 027 320 1414 Email: milly@cherish-respite.com

Est. 1978

zodiac signs

For All Your Signage & Apparel Needs

JSL
Juffermans Surveyors Ltd

South Taranaki offices are at:

Te W'anake The Foundry, High Street, HAWERA
06 278 4135

32 Ridgeway Street, WHANGANUI
06 345 0333

www.jsl.nz | info@jsl.nz

Allen Juffermans
Surveyor
Juffermans Surveyors Ltd

Prospero Place
STRATFORD
06 765 4122

FREE EXTRA CHAIN WITH SELECTED STIHL PETROL ENTRY LEVEL CHAINSAWS.

MS 172 (16") PETROL CHAINSAW \$450	MS 182 (16") PETROL CHAINSAW \$555	MS 212 (16") PETROL CHAINSAW \$645
FREE EXTRA CHAIN	FREE EXTRA CHAIN	FREE EXTRA CHAIN

WE PICK UP AND DELIVER TARANAKI WIDE

STIHL SHOP HAWERA
25 Glover Road, Hawera
Ph: 06 278 4753 Fax: 06 278 5682
Email: hawera@stihlshop.co.nz

STIHL SHOP
Outdoor Power Equipment
www.stihlshop.co.nz

Hundred year house renovated

An historic house which was one of the original railway houses in Opunake is for sale.

Built a 100 years ago it has just been put on the market by registered psychotherapist Robert Shaw who has been writing a column in the Opunake & Coastal News for the last year. Robert is leaving Opunake after 18 years and going to Nelson to be closer to family and his four grandchildren.

In the 18 years he's owned the three bedroom Gisborne Terrace property he's made considerable changes to it careful to preserve the original character of the house and its high ceilings.

The attractive centrally located wood lined liv-

ing area has a wood-fire with a wet back.

He has also increased the main living area by extending and enclosing the original porch to create a conservatory.

He's also incorporated what was the former garage into an extra living space adding a separate room used as an office.

The entire interior has been repainted and recarpeted throughout and double glazing added to the windows which Robert said has "helped to keep the heat in". He's also fully insulated the house and says the double glazing seems to improve the insulation. The house is made of concrete blocks which additionally have good insulating prop-

erties. "It's cool in summer and warm in winter," says Robert adding "During the day in winter the heat heats up the blocks and at night it gives out the heat."

Other renovations have included adding another window to the master bedroom which has an open fire to capture the morning sun and updating the bathroom.

Robert's also added a modern double garage and a concrete driveway to the three bedroom house.

Just over a hundred years old, 22 Gisborne Terrace was one of several in Gisborne Terrace which ran alongside the railway line removed some years ago and is now a reserve known as Hurst Park which is part of the Opunake walkway. There is access to

the reserve from the garden.

The well established garden has seven kauri trees which Robert has planted. "They keep their shape and they look nice," says Robert. Other trees he's planted include a New Zealand honey suckle tree which attract birds. The tree looks like a pine tree but has pine nut which you can harvest. An old plum tree on the property fruits "very well" and there's an old apple tree and two fig trees.

The property is completely fenced and has a security system.

Robert has been working as a counsellor for the last 9 years working mostly in New Plymouth and also on-line. He hopes to continue his counselling work in Nelson.



The main living area with the high ceilings showing the log fire and the conservatory at left.

HEADSTONES
Forever Memories Your Way
STONE CREATIONS NZ
your local Monumental Mason
0508 76388437
Based In Okato on the Taranaki Coast

MOBILITY & MORE 2010 LTD
0800 765 763
TARANAKI WIDE SALES & SERVICE

Taranaki wide sales, hire and service. Free delivery, competitive prices.

MOBILITY SCOOTERS and all living aids - we'll help you with whatever you need.

Kevin & Marilyn Bromell
154 PRINCES ST - HAWERA
Ph: 06 278 8072 - Freephone 0800 765 763
www.mobilityandmore.co.nz

Harcourts

Opunake, 21 Gisborne Terrace

Your Opunake Oasis!
This 3-bedroom cottage blends character and potential, set on a private section near Opunake's beaches, surf breaks, and local shops. Relax in the conservatory, enjoy the north-facing garden and deck, and access the Opunake Loop Trail. With high ceilings, a wood burner, double glazing, and a new double garage, it's ready for you. Perfect for a quiet retreat or coastal lifestyle.

Scan here to learn more

Carley Eklund
M 021 072 0874

Shelley Landon-Lane
M 027 297 8837

Team Taranaki Ltd Licensed Agent REAA 2008

YOUR KITCHEN SPECIALISTS!

HK
HAWERA KITCHENS - THE KITCHEN BROTHERS

MJ MASTER JOINER

50 UNION ST HAWERA
06 278 7044
info@haverakitchens.co.nz
www.haverakitchens.co.nz

EXCEED ENGINEERING

STAINLESS STEEL & ALUMINUM SPECIALISTS

- CUSTOM FABRICATION
- ALUMINIUM, STAINLESS & COPPER WELDING
- FOOD GRADE WELDING & FABRICATION
- PROJECT MANAGEMENT
- ONSITE REPAIRS & SERVICE

Jesse Fowell
Owner

0273784053 | jesse@exceedengineering.co.nz

with style new to the property market



The office added recently which could be a fourth bedroom.



The separate dining area off the kitchen.



A house, built to last. The main entrance to the charming property.



The main living area off which are three bedrooms and a conservatory.



Omata, 171 Sealy Road

Near Acre Lifestyle, City Fringe, Sea Views!

- Breathtaking coastal, sea, and rural views throughout
- Designer kitchen, Pyroclassic fireplace, extra large sheds
- Rural living with no livestock to manage and privacy from neighbours
- Over 35 fruit trees, raised vege garden beds, and room for chickens
- Mins to New Plymouth CBD, Oakura, Omata School and The Green School



CELESTE NGAREWA
M 027 273 3956
Team Taranaki Ltd Licensed Agent REAA 2008



Scan here to learn more

Palmers
NEW PLYMOUTH
Growing Great Gardens
IN TARANAKI
OPEN 7 DAYS, 9 - 5

PALMERS NEW PLYMOUTH,
680 DEVON ROAD, WAIWHAKAIHO
PH: 06 758 7455

Together let's send less to landfill

Would your business benefit from joining the **FREE** Resource Wise Business Programme?

The South Taranaki District Council (STDC) is excited to announce the public launch of the **FREE** Resource Wise Business Programme. This impactful initiative is designed to help local South Taranaki businesses reduce waste, optimise resource efficiency, and build a more sustainable and environmentally conscious community.

Through this programme, businesses will receive essential tools, expert guidance, and ongoing support to adopt sustainable practices that reduce landfill waste, cut operational costs, and positively impact our environment. By joining, businesses can take significant steps toward sustainability that benefit both their operations and the planet.

We're already working alongside outstanding partners like Masse

Hāwera, Hub Catering, and Houghtons Plumbing, Heating and Gas. Hub Catering is already leading the way as the first business to achieve Platinum status.

Together, we're creating a network of businesses dedicated to waste reduction and resource conservation. Be part of this collective effort toward waste reduction, responsible resource use, and a greener future. Start your sustainability journey today by signing up to this programme online at

www.southtaranaki.com/resourcewise

For more information, get in touch with us by email envirosus@stdc.govt.nz or call the Environment and Sustainability Team on 0800 111 323.

Masse Hāwera

"Being a small business here in Hāwera, it's a great incentive and opportunity to be part of the Resource Wise Business Programme. My staff and I are eager

to implement different habits that help save the environment. Recycling as much as we can and opting for reusable products instead of one-use items, not only will it save us money as a business, but keep us bio friendly with our neighbours," says Masse Club Manager Myree Woodhead.

"You may have to take five extra minutes to wash, rinse, dry or sort items at the end of the day, but your general

waste will be so minimal, it'll be worth it. I'm hoping other businesses in Hāwera see this as an opportunity to put their best foot forward and take the plunge with us," she says.

Houghton's Plumbing, Heating and Gas

"At Houghton's Plumbing Heating & Gas Ltd, we are always striving to do better and so are pleased to be

Continued on next page.

Houghton's
Plumbing, Heating & Gas Ltd

Contact us today! ph. 06 278 8883 info@houghtonsplumbing.co.nz

Master Plumbers Master Gasfitters Master Drainlayers

www.houghtonsplumbing.co.nz



Masse Hawera.

RESOURCE WISE
PROGRAMME



**Together
Let's send less
to landfill**

South Taranaki District Council's Resource Wise® Business Programme is available to all organisations within South Taranaki. The programme consists of five stages for organisations to work through.

Each stage has actions that involve education and reducing waste to landfill.



Find out more at

www.southtaranaki.com/resourcewise

Register your interest online today!

Together let's send less to landfill

Continued from previous page.
involved with the South Taranaki District Council and their Resource Wise Business Programme. We have made a lot of changes in the that way we recycle, and the council provided us with useful information as to what and where items can take time to form but we are adapting well and are pleased to be able to redirect as much as we can from landfill. We encourage others to get on board with this initiative."



Houghtons Plumbing & Gas.

to gain greater knowledge around how we, as a business, could be more proactive around what waste we were recycling and what we were putting into general waste.

What we have gained as a Catering company is less general waste which has reduced costs for rubbish collection. We recycle our plastics and cardboard, while our food scraps go to a local farm, this helps with the reduction of waste. I recommend anyone in the food industry to take up the opportunity to do the programme."

Brent Cudby, Hub Catering



Hub Catering

Hub Catering
"We joined the Resource Wise Business Programme

ECAN fails to provide free drinking water testing

Greenpeace Aotearoa say they are shocked by the decision by Environment Canterbury to not provide free water testing for rural communities impacted by nitrate contamination.

ECan voted in favour of running region-wide awareness communication campaigns for private well owners on water quality risks and commissioning a pilot study to test a number of private drinking water bores for nitrate and E. coli in high-risk areas.

However, they stopped short of running region-wide water testing events for private well owners, claiming this would be too costly - a claim Greenpeace disputes.

Greenpeace spokesperson Will Appelbe says "It is disgraceful to see that Environment Canterbury will not be providing free water testing to rural communities. Instead, it is leaving them to pay the price of ECan's failure to



regulate the intensive dairy industry, Canterbury's primary source of water pollution at the source."

"Safe, healthy drinking water is a fundamental human right, yet Canterbury is the hotspot for drinking water contamination in Aotearoa.

"While it's good to see ECan paying more attention

to the issue of drinking water quality, a communications campaign and pilot study is simply not good enough. People across Canterbury are already experiencing high levels of nitrate in their drinking water, and they deserve to know whether the water coming out of their kitchen tap is safe to drink."

The maximum acceptable

value for nitrate in New Zealand drinking water is 11.3 mg/L, set in the 1950s in response to Blue Baby Syndrome. However, a growing field of research shows potential health risks at much lower levels of nitrate in drinking water.

A Danish study found that at over 1 mg/L of nitrate in drinking water, risks of bowel cancer increase, while a US evaluation found health risks increased with every additional milligram. A Californian study in 2021 found that when pregnant people consumed water that was over 5 mg/L of nitrate, the risk of preterm birth increased by 47%.

"ECan has a responsibility to protect water at the source, and for decades they have failed to do so. Now, the consequences are becoming clear, and they're desperately trying to avoid the costs associated with that. But that is not good enough," says Appelbe.

"Ultimately, unless ECan

enforces a phase out of synthetic nitrogen fertiliser and acts to regulate the intensive dairy industry, nitrate pollution will worsen and so will the health impacts associated with long-term exposure to nitrate. But the bare minimum they should be doing is providing free water testing.

"The costs associated with running free water testing events, as outlined in the proposal presented to councillors, represent a mere 0.05% of ECan's 2023-2024 budget.

"There is no justification for choosing to run a communications campaign instead of actively helping the communities impacted by nitrate. We're calling on ECan to protect local residents and ensure everyone, no matter where

they live, knows whether the water coming out of their tap is safe to drink."



MOVING?
Subscribe to the
Opunake &
Coastal News
and we'll post
you a paper as
soon as it's out!

06 761 7016
OPUNAKE & COASTAL NEWS


NEED A SHED?

"We'll See You Right"

We have extensive experience with over 3000

- * Barns
- * Implement Sheds
- * Utility Sheds
- * Stables
- * All purpose Farm Sheds

We are fast, efficient and economical.
Free onsite visit to discuss all your requirements



STRATFORD

75 WARWICK RD, STRATFORD - 765 7800

POLARIS

Think Outside



COVERING ALL OF TARANAKI FOR

SALES, PARTS & SERVICE

Transag CENTRE

Farm machinery since 1986

16 GLOVER ROAD, HAWERA

SALES: WAL 027 223 6223

PARTS & SERVICE: 06 278 5119



A Biblical seductress and telescope at Cecilia's

Among the items of interest at Cecilia's on Tasman in Opunake is a 1150mm-high bronze statue of Salome.

On his birthday Herod gave a banquet for his high officials and military commanders and the leading men of Galilee. When the daughter of Herodias came in and danced, Salome pleased Herod and his dinner guests. The king said to the girl, 'Ask me for anything you want, and I'll give it to you.' And he promised her with an oath, 'Whatever you ask I will give you, up to half my kingdom.' She went

out and said to her mother, 'What shall I ask for?' 'The head of John the Baptist,' she answered. At once the girl hurried in to the king with the request: 'I want you to give me right now the head of John the Baptist on a platter.' The king was greatly distressed, but because of his oaths and his dinner guests, he did not want to refuse her. So he immediately sent an executioner with orders to bring John's head. The man went, beheaded John in the prison, and brought back his head on a platter. He presented it to the girl, and



Salome.

she gave it to her mother.

Salome's role in John the Baptist's death has been a subject of much discussion and interpretation. Some see her as a seductress who used her beauty and feminine wiles to manipulate Herod into granting her request. Others suggest that she

was simply a pawn in the schemes of her mother and stepfather. Whatever her motives, Salome's involvement in John's death has cast her in a negative light in many religious and cultural traditions.

Despite this, Salome has continued to captivate the

imagination of artists and writers over the centuries.

Another interesting item is a 60cm-long brass and leather telescope is in

one third of his employer's large fortune and the telescope manufacturing portion of the business.

By 1874 the company was



The telescope conveys the makers' name.

pristine order, made between 1858 and 1859 and engraved - Ross - London no- 21172. It comes with the original leather container.

Andrew Ross founded the company in Wigmore Street, London in 1830. In the 1840s they began producing camera lenses, which were engraved "A. Ross, London." In 1859 after Andrew Ross's death, his son Thomas Ross took over the business.

John Henry Dallmeyer who married Ross's second daughter, Hannah, inherited

known as Ross & Co.



Complete with leather container.

CECELIA'S ON TASMAN

89 Tasman Street, Opunake

Re-Purpose Is the Name

• Our passion lies in giving new life to old treasures. From upcycled furniture to one-of-a-kind curiosities, each piece has a story waiting to be shared.

Nostalgia is the Game

• Step inside and immerse yourself in the past. Vintage and antique finds, retro decor, collectibles, beautiful furniture, tools old and new, garden implements. Timeless classics await. Beautiful classic jewelry. Classic porcelain - Temuka, Crown Lynn

Opening Hours: 10am-3.30pm 7 days a week.

Facebook: Cecilia's on Tasman
Ph 027 246 8604

DEKEN MOTORS

VEHICLES FOR YOUR LIFESTYLE

(06) 759 9943
Ton: 0274 938 146

<p>Now \$38,990</p> <p>2020 Tesla Model 3 Long Range AWD Sunroof, Leather, Immaculate, 48kms</p>	<p>Now \$45,990</p> <p>2024 Toyota Corolla CROSS Z 2 to choose, Black/Silver, AWD, 1.8 Auto, Brand new</p>	<p>Now \$47,990</p> <p>2023 Toyota Prius G SPEC As new, 14kms, Leather, Sunroof, 2L</p>	<p>Now from \$29,990</p> <p>2020/21 MINI Cooper Countryman ALL4 SE, black or white, Great buys</p>	<p>From \$9,990 Economy</p> <p>2013-19 Toyota Aqua 1.5 Hybrid 5 to choose, all low kms, great colour selection</p>
<p>\$89,990</p> <p>2020 Land Rover Defender D240 SE 1 owner, winch, leather, Sun Roof, 59kms</p>	<p>\$69,990</p> <p>2018 Land Rover Discovery HSC 3.0, DSL/T, Sun Roof, Leather, Very nice, 62kms, 7 SEATER</p>	<p>Now \$37,990</p> <p>2021 Mazda CX-8 TAKAMI NZ new, 4WD, Sunroof, 2.2L, Diesel, Full leather, 54kms, 7 SEATER</p>	<p>Now \$52,990</p> <p>2021 Ford Everest TITANIUM 1 owner, Leather, Sunroof, As new, 26kms</p>	<p>\$39,990</p> <p>2020 Hyundai Santa Fe LTD 2.5, Sun Roof, Leather, Great condition, Tow Bar, Low kms</p>
<p>Now \$38,990</p> <p>2014 BMW X6 50M 4.4, V*, Twin Turbo, only 30kms, Amazing car</p>	<p>Now from \$17,990</p> <p>2011/12 Mitsubishi Delica 4WD, 7 seater & 8 seater, Pearl or Black, 4 to choose</p>	<p>From \$43,990</p> <p>Mercedes-Benz ML 63, V8, AMG 5.5, Turbo, Beautiful Condition, 79kms, Great Buying</p>	<p>From \$36,990</p> <p>2022/23 Toyota Yaris Cross 8000kms, 29kms, Hi Spec, Leather, Black/Pearl, 3 to choose</p>	<p>From \$33,990</p> <p>2023/24 Suzuki Jimny, Sierra, 4WD 2 to choose, 1 brand new, one auto, one 5 spd, Brand new</p>
<p>Now \$29,990</p> <p>2014 Audi S6 V8 NZ New, Amazing performer, Great condition, Must be seen!</p>	<p>Now \$44,990</p> <p>2021 Toyota RAV4 G SPEC 2.5, Auto, 33kms, HYBRID</p>	<p>From \$12,990</p> <p>2013/16/18 Subaru XV 2.0, 4 to choose, LOW KMS</p>	<p>From \$37,990</p> <p>2016/18 Jeep Wrangler Red, Black, White, Limited & Sahara, 50kms & 60kms, All low kms</p>	<p>\$69,990</p> <p>2019 Audi Q8 S LINE 3.0, Full spec, New model, Brilliant car, 71kms</p>

Another chapter begins for popular local hall

All systems are go and everything is back up and running for the Kapuni War Memorial Hall. An arson attempt 18 months ago has not stopped the people of Kapuni from wanting to use a hall that has long been the centre of their community.

The hall was closed following a fire in August 2023 which was attended by the Manaia, Kaponga and Okaiawa fire brigades. There was damage to both the back and inside of the hall, and a 47 year-old-man was arrested and charged with arson.

The hall had had another close shave when a stolen Toyota was set alight behind it on February 28, 2023. Onlookers and bypassers fought the blaze until the Manaia Fire Brigade turned up.

Now after extensive renovations the hall is now open and back in business.

"It's such a beautiful hall and we really want it to be utilised and used," says hall committee treasurer Olivia Luscombe. "It would be one of the biggest halls around and with an upgraded kitchen we can cater for all sorts."

Bookings can be all or part of the hall, or even for a



Kapuni War Memorial Hall treasurer Olivia Luscombe and the renovated kitchen.

The Taranaki Rural Support Trust also have an event lined up.

Olivia and committee member Erin Bromell spoke to the Opunake and Coastal News on February 12.

"We did our final clean a fortnight ago and we are now able to take bookings," says Olivia. "We've already

and Mary Butler. Mary is the current hall committee chair. "They were the driving force behind getting this up and running," says Olivia.

As reported in the Opunake and Coastal News (13 June 2024) the Taranaki Coastal Community Board granted them \$10,999 from the Waimate Plains

as well as groups holding AGMs and people holding birthday parties and other events.

The appliances have been upgraded and the kitchen comes with double fridges, double ovens and a new dishwasher.

Erin says it could possibly be used for cooking classes.

Like Olivia she wants to see the hall put to good use.

"It would be so sad to see these halls go to rack and ruin. We're just so proud of the hall we have and it would be so sad to see it collect dust."

She recalls the cabarets which used to be held here, and the discos.

"Every month there would be a disco here and everyone would come from miles around," she says.

The back supper room which had been extensively damaged in the fire has been restored showing no sign of the trauma of 18 months ago.

Another room has mementoes of Kapuni from years by including trophies

and sketches of the Kapuni School and the Kapuni Hall which preceded the current one, opened in 1956. There is a book of reminiscences of Kapuni by well-known local farmer Tom Gibson as well as history of the Kapuni Lactose Factory, both encased in a glass case.

Olivia says anyone interested in hiring the hall can contact her by phoning (027) 261-5665

NEWTON Gordge JOINERY ALL DOMESTIC & COMMERCIAL JOINERY

• Kitchens • Stairways • Vanities • Lounge Units • Bench Tops • And more

67B BREAKWATER RD UP NORMA'S WAY • NEW PLYMOUTH
PH: (06) 751 5065
WWW.NEWTONGORDGE.CO.NZ



The back supper room has been restored after the hall was forced to close after an arson attack.

single room.

Bookings already lined up include a Golden wedding anniversary for a couple who had had their reception here 50 years ago.

had our first AGM for a small group last week."

She says there had been good support for the project and from members of the local community like Geoff

Development Levy, a fund which supports projects in the area taken up by the former Waimate Plains District Council.

Before the fire the hall had been used by groups like Taranaki Indoor Bowls who would use it from March-August. Other users included the Shell Todd Natural Gas and Fonterra Lactose plants, the Kapuni WI and Floral Art Groups,



The Kapuni War Memorial Hall is available for use.

LAWYERS

OPUNAKE LAWYERS

Thomson O'Neil & Co.

Our Opunake Office is attended by:

Robert England on Wednesdays & Fridays

for buying and selling houses, farms & businesses;

Trusts, Wills and Estates.

FOR ALL YOUR LEGAL REQUIREMENTS

30 TASMAN ST, OPUNAKE

PH: 761 8823

Sick of Nr.8 wire accounting?

Our **TEAM** will walk along side **YOU** to achieve your **DREAMS**

Hipp Accounting Limited
06 928 5608

- Business Planning
- Budgeting & Forecasting
- Taxation
- On-Farm Experience
- Just a phone call away

Figured
www.hippaccounting.co.nz

WARM UP FOR WINTER NOW!

LOGFIRES
WETBACKS
GAS FIRES
CENTRAL HEATING
RADIATORS

SAVVYGAS
PLUMBING AND DRAINAGE

Call us for a free quote

06 7655336 INFO@SAVVYGAS.CO.NZ WWW.SAVVYGAS.CO.NZ

PROUD TO SUPPORT THE KAPUNI HALL RENOVATIONS

Americarna rides again



The cars arrive at Opunake beach.



The kitchen staff from The Good Home at left with Darren and Justin far right dispensing beer from the 1961 Dodge ambulance.



First timers at Americarna John and Yvonne Lang in front of their 1963 Pontiac.

Americarna attracted the usual interest in Opunake with everyone turning out to see the spectacle that Taranakians clearly love.

Numbers may have been slightly down on last year according to one patron but by all accounts there was the usual buzz around the event with a number of new participants joining the extravaganza.

John and Yvonne Lang had come from Waipu to take part in the annual event to proudly show off their 1963 Pontiac Bonneville they'd recently bought "for a lot of money".

The first time on Americarna they had recently bought the Pontiac which they said was nice riding, seating two in the front and two in the back and convertible with a hood that comes off.

Steve Bennett had come all the way from Nelson with 11 friends to take part in the event. His 1937 Studebaker was a custom car hot rod. A two seater and immaculate inside it was the first time since Covid he'd attended

Americarna and was clearly enjoying the experience. He described the vehicle which had a new motors put in as "very efficient."

For Charlie Tetenburg from Rotorua it was his fifth time attending Americarna with his 1934 Chevrolet master sedan. Converted from a vintage car to a hot rod in 2008 he bought the stunning vehicle for \$65,000.

The owners of New Plymouth's The Good Home restaurant Daren Kerslake and Justin Vile brought along a 1961 Dodge ambulance. Purchased by St John and assembled in



Steve Bennett and his 1937 Studebaker.



Charlie Tetenburg from Rotorua at the wheel of his 1934 Chevrolet.

New Zealand the Dodge vehicle which they bought 6 months ago. "The beer taps were already there," said Darren. He had also brought along a 1964 Chevrolet which he bought on e-Bay and was in the process of doing up.

175 Opua Road, Opunake
Mike: 027 422 4394

COAST 45 PANEL WORKS

CAR RESTORATION
Vintage ~ Classic ~ Street Custom ~ Hot Rod

coast45panelworks@gmail.com

CSR
CUSTOM STREET RIDES

Custom & Classic
Restoration Rod Shop
INGLEWOOD, TARANAKI

CSR are one of New Zealand's leading hot rod shops specialising in ground up custom vehicles and classic restorations.
Fully equipped shops for all Mechanical, Fabrication, Electrical, Panel and Paint.



ELMO'S
Garage

- ✦ RUST REPAIRS
- ✦ WOF RUST REPAIRS
- ✦ EXHAUSTS
- ✦ PANEL & METAL FABRICATION
- ✦ FULL RESTORATIONS

TALK TO ELMO TODAY
027 262 7845 + ELMOSGARAGE@HOTMAIL.COM

CUSTOMS + CLASSICS + LOWRIDERS

CLASSIC AUTO REPAIRS
OPUNAKE

NIGEL FRASER
CLASSIC AUTO REPAIRS
44 KING STREET, OPUNAKE
06 761 8098
westmister@xtra.co.nz

Specialise in Classic Restoration
Insurance Accident Repairs
Vehicle Repaints
Outdoor/Indoor Furniture Repaints
Interior and Kitchen Door Repaints
Caravans
Rust Repairs for WOF
All Enquires Welcome - Free Quotes Given

Famous hot rod car manufacturer makes beeline for Bo



Bo Baldwin and Roy Brizio.

Bo Baldwin of New Plymouth had a memorable 16th birthday when Americarna was in Taranaki. He was walking along the road admiring the vehicles when Roy Brizio, a famous hot rod manufacturer spotted him wearing a

Brendan Murry drag racing shirt. Surprised, a delighted Roy immediately stopped and asked if he could take a photo of Bo to send to Brendan in the USA, a good friend of his. Roy builds cars for celebrities around the world

and featured recently on TV1's Seven Sharp. These include 14 cars for none other than musician Eric Clapton. After leaving New Zealand Roy was off to attend Eric's 80th birthday in the UK. A sweet 16th for Bo.

Kaponga WI elects new top table for 2025

Kaponga WI held their AGM at the Kaponga TET Centre in February and members were welcomed by President Jo Ellis. Members were notified of the upcoming events including Founders Day celebrations on February 28, National President Jude Vaughn's visit to Te Kiri's 88th birthday celebrations to be held at the Kaponga Hotel, Ballantynes fashion show in Hawera on March 13 and the National Conference in Hamilton on May 24-25. Kaponga WI are to provide kitchen duties at the Federation AGM on April 9. Dorothy Hughes and Joy Eliason were thanked for the wonderful display of their handcraft at the Hawera Horticultural day. Much feedback received on how amazing their entry was.

The AGM was then held with President Jo Ellis reading her report which was ably prepared by Secretary Fiona Collins and confirmed what an enjoyable and varied year we have had.

The election of officers saw a complete change at the top table. The new President will be Dene Lines, Secretary Jo Ellis and treasurer Carolyn Nicholas. Other positions were filled with ease and we congratulate the new officers and wish them well for the new year.

Fiona Collins was presented with a gift and card to show the members



Retiring office holders Sharyn Hurley and Fiona Collins thanked by President Jo Ellis.

gratitude for all the years of service she has given to WI and Kaponga. Fiona we just hope you enjoy just being a member now.

Sharyn Hurley was also given a gift and card in appreciation of the wonderful job she has done looking after the club's purse and the great financial position she has created for the members. Best wishes in WI.

The annual prizewinners were revealed as follows: Jubilee Cup for overall points. 1. Dene Lines. 2. Jo Ellis who received the

Morrissey Cup for runner up. 3. Dorothy Hughes.

Thanksgiving Cup for gardening. 1. Diane West. 2. Carolyn Nicholas. 3. Jo Ellis. Handcraft Cup. 1. Jo Ellis. 2. Joy Eliason and Nancy Stokes. 3. Dene Lines.

Miscellaneous Cup. 1. Dene Lines. 2. Dorothy Hughes. 3. Sharyn Hurley.

All prizewinners were congratulated by President Jo and all members were thanked for a fun filled interesting year and wished a wonderful 2025 WI year and the good health to enjoy it. Carolyn Nicholas

Ministrels play the Seekers

Paul and Wynne Bowers-Mason are ministers. They can also sing and perform together as the duo The Ministrels. On Sunday afternoon February 16 they were at St Barnabas Church Opunake dishing up a helping of nostalgia singing hits from the iconic Australian group The Seekers. Admission was by koha to the Opunake Food Bank.

"This is a lovely acoustic

venue," Paul told everyone. "I am sure this is what they had in mind when they built this."

Based in Stratford Paul and Wynne look after Anglican churches in Stratford, Eltham, Kaponga and Opunake.

"We met through university and the Christian Fellowship," Paul told the Opunake and Coastal News (15 December 2023). "We did a little bit of singing

together and we sang part of our vows together."

Paul is also known as one half of the musical duo The Mason Brothers with brother Wayne. As a member of the Fourmyula Wayne composed the song Nature which APRA named as the greatest New Zealand song of all time.

"Who was at the Bowl of Brooklands when the Seekers were here?" Paul asked everybody. Several hands shot up.

"We were too young," admitted Paul, "But both our families had Seekers records."

The concert included the well-known hits like Georgy Girl, A World of our Own, Train Whistle Blowing and I'll never find another you, along with other numbers less well known.

They began with The Times they are a changing.

"That's us singing the Seekers singing Bob Dylan," said Paul. "The children who are beyond your control are probably you," he quipped. Their songs were

interspersed with stories about those who wrote them like Tom Springfield, brother of Dusty, American activist Malvina Reynolds, Pete Seeger, Paul Simon and Seekers band members Judith Durham and Bruce Woodley.

Paul said he could claim a link to Bruce Woodley as Woodley wrote a song for his brother Wayne's band the Fourmyula.



Wynne and Paul Bowers-Mason sing the Seekers at Opunake's historic St Barnabas' Church.



BREWER'S UPHOLSTERY

CARPET OVERLOCKING

LOUNGE SUITES, ANTIQUES, OFFICE FURNITURE,
DINING CHAIRS, FRAME REPAIRS, GENERAL
UPHOLSTERY, PVC WELDING REPAIRS

STEPHEN
105 MANAWAPOU RD, HAWERA
PH 06 278 4337 OR 027 4491 437
brewersupholstery@outlook.com





RTL

ROOFING TARANAKI

CONTACT US

📞 06-759-4976

🌐 www.roofingtaranaki.co.nz

**Your complete solution
for roofing services
in Taranaki.**

Members' bill puts woke banks on notice

Federated Farmers say Andy Foster's Members' Bill will stop lenders from unfairly de-banking legitimate businesses and industries.

"Banks have been under huge pressure recently for some of their more unpalatable lending practices," Federated Farmers banking spokesperson Richard McIntyre says.

"This Bill is only going to add to that scrutiny and will

shine a white-hot light on big banks that have been forcing their ideological views down the throats of everyday New Zealanders."

Federated Farmers have been vocal critics of the banking sector in recent years and were instrumental in securing the select committee inquiry currently underway.

They have also played a significant role in exposing discrepancies between the different targets big

Australian banks are setting for Kiwi farmers compared to their Australian clients.

Late last year the organisation blew the whistle on the Bank of New Zealand's outrageous decision to effectively de-bank legitimate businesses like petrol stations from

2030.

"Federated Farmers support this Bill and will be encouraging all Government parties to throw their support in behind it," McIntyre says.

"Lending decisions should be based on financial drivers, not ideological or political considerations.

"Legitimate New Zealand businesses, like farms and petrol stations, should not be unfairly targeted by banks because of the industry we operate in.

"It's important we can continue to access banking services and the capital we need to keep growing our

businesses, creating jobs, and contributing to the economy.

"Provided we're following the laws set by our democratically elected Government, we should be able to go about our business without our bank becoming the moral police."

Pesticides worsen biodiversity crisis

A major study has concluded that pesticides are overwhelmingly harming hundreds of species they aren't meant to affect.

The systematic review analysed over 1700 experimental studies (including a handful from New Zealand) on the effects of pesticides.

It found that pesticides can reduce plant and animal growth, and animals' ability to find a mate or catch prey. However, the researchers note that cutting pesticide use could affect global food supply and farmer livelihoods.

David Wright, Science Team Leader – Microbial Solutions, AgResearch,

comments:

"This article highlights the wide-ranging potential for negative impacts from synthetic pesticide use, and the urgency in which we need to adopt alternative practices that reduce those impacts.

"There is increasing interest and use of microbial technologies to complement, or provide alternatives to, synthetic chemistry. Bioprotectants containing live micro-organisms or derivatives such as peptides are considered safer alternatives as they are generally more specific to target pests and have a significantly shorter environmental residue.

"There are some excellent examples of microbial biopesticides under development, including AgResearch-developed AgR96X that contains a natural pathogen specific to the NZ grass grub and Manuka beetle. AgR96X has shown equivalence to registered synthetic products in field trials.

"While biopesticides offer promising alternatives, sometimes several products may be required to target multiple pests that are currently controlled by a single broad-spectrum agrichemical. Research is needed to incorporate these into production systems and a step change in thinking

from the current reactive silver-bullet approach.

"We need to move to more integrated systems that incorporate an increased understanding of the pest/disease lifecycle and monitoring to predict outbreaks, along with the use of multiple technologies that include breeding for improved animal/plant genetics with resistance to pests and disease, changes to farm management practices, digital tools to identify areas of risk, and a move from broadcast treatment to targeted delivery of biopesticides and where necessary agrichemicals at significantly reduced volume."



Kalin CONTRACTING
GROW | SUPPORT | DELIVER
www.kalincontracting.co.nz
027 384 4822

**New Season Hay and Straw
Call to order**



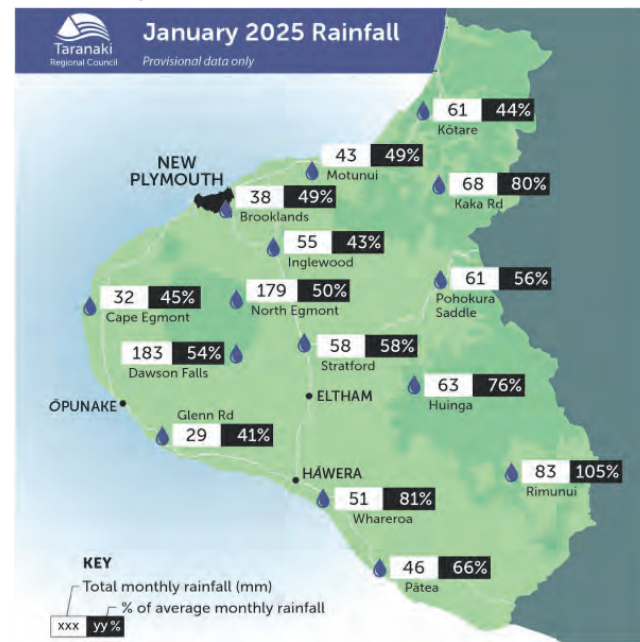
SALES, PARTS & SERVICE  **NEW HOLLAND**
06 278 5119
Transag CENTRE RAYMOND 0627 444 8861
Farm machinery since 1986 PAUL STANTON 027 498 7277

16 GLOVER ROAD, HAWERA



TARANAKI WIDE

Dry weather continues



Last year ended with December having 34% less rain than usual and the first month of 2025 mirrored that exactly with 34% less rainfall across the region in January, according to Taranaki Regional Council (TRC) figures.

This was particularly the case in South Taranaki with the monitoring station at Kaupokonui at Glenn Rd recording 59% less than usual. The district also saw the highest soil temperature with 28.1°C at Waitōtara at Rimunui Station on 22 January.

Mean river flows for January were 40.1% lower

than typical values, low flows were 11.6% lower and high flows 66.2% lower than typical values while mean river (non-mountain) water temperatures were 17.6°C, an average of 0.6°C cooler than long-term January values. The maximum river water temperature was 26.3°C at Kapoiaia at Lighthouse on 24 January.

The maximum river water temperature recorded in January was 26.3°C at Kapoiaia at Lighthouse on 24 January. The maximum wind gust recorded in January was 72.4km/hr at Waitōtara at Ngutuwera on 12 January.

More funding for QEII Trust

A funding boost for the QEII National Trust is a win for farmers and the environment, Federated Farmers vice president Colin Hurst says.

The Government have announced an additional \$4.5 million for the trust over the next three years.

"When it comes to environmental bang for your taxpayer buck, I can't think of a better investment than the QEII Trust," Hurst says.

"But despite the amazing work they do in our rural communities to improve biodiversity and other environmental outcomes, the trust hasn't had an increase in funding for over

a decade.

"During that time the trust has faced huge inflationary pressures and a 28% increase in demand for their services.

"Today's announcement may not be the doubling of funding Federated Farmers called for, but it's certainly a positive step in the right direction and will do a lot of good."

The QEII National Trust was established in 1977, with Federated Farmers dairy chair (the late) Gordon Stephenson a key instigator.

The trust partners with landowners who are willing to voluntarily protect their land without selling or donating it.

Covenants ensure special areas of bush, wetland and biodiversity are protected for future generations, in perpetuity.

There are now more than 5,200 covenants covering 187,774 hectares - the vast majority on farms.

"Without an increase in funding the QEII Trust would have been forced to scale back the number of new covenants it could support," Hurst says,

"That would have been a huge setback for nature, and the ongoing efforts of many farmers who are committed to protecting special areas of biodiversity on their land."



SKYWORK™

Facial Eczema
Warm wet weather sees spore numbers rising and the risk of facial eczema in your animals.
Give us a call to spray your pasture with specialised fungicide to slow the development of the fungus and subsequent production of spores.

We have the knowledge and skills to help you!

CONTACT US
Office: 06 755 1685 Paul: 021 324 283 Mark: 027 239 6750
Email: taranaki@skyworkhelicopters.com

DairyNZ supports changes to training

DairyNZ is supporting a proposed new learning model for apprenticeships and traineeships that would see training, education, and pastoral care delivered together to provide the best chance of success.

The Government is consulting on the future of work-based learning in the vocational education and training system and has two

options for consideration.

An Independent work-based learning model would mean a learner receives both education and pastoral care from an approved training provider, while a Collaborative work-based learning model would involve both a provider to manage education, and an Industry Skills Board to provide pastoral care to each

learner.

DairyNZ Senior People Specialist Jane Muir said DairyNZ supported the independent work-based learning model.

“We want to see an adequately funded system that prioritises learners while also ensuring value for the employer, to ensure the best chance of success for all involved,” she said.

“The relationship between the learner and the provider is crucial and separating the pastoral care from the organisation most invested in their success simply adds more costs and a layer of complication.

“Building work-based capability on-farm is of critical importance.

“DairyNZ is in a unique

position with Dairy Training Limited (DTL), a subsidiary of DairyNZ, being well-equipped with practical insight and expertise into the opportunities and challenges of delivering vocational education successfully.

“Any new system needs to support private training establishments, such as Dairy Training Limited, to continue to grow.

“A recent survey showed that 95% of DTL students either agreed or strongly agreed that their capability

improved as a result of completing a DTL course.

“DTL course enrolments have also increased by 500% over the past five years and continue to grow.

“That’s why we believe a DTL model adds value to the dairy sector and has potential to grow.

“As a sector, dairy farming generates more than \$25 billion in exports for New Zealand, and it’s our people on-farm that help us realise this potential.”

Celebrating Maori farming

Agriculture Minister, Todd McClay and Minister for Māori Development, Tama Potaka have congratulated the finalists for this year’s Ahuwhenua Trophy, celebrating excellence in Māori sheep and beef farming.

are Whangaroa Ngaiotonga Trust and Tawapata South Māori Incorporation Onenui Station.

“The Ahuwhenua Trophy is a prestigious award celebrating the vital role Māori sheep and beef farmers play in New Zealand’s economy,” Mr McClay says.

“This year’s finalists exemplify excellence in agribusiness, driving growth in our food and fibre sector while creating jobs in rural communities.

“Māori agribusiness remains a key part of our rural economy, with sheep and beef operations alone employing over 10,000

Māori across the value chain.”

“Their hard work will help achieve the Government’s ambitious goal of doubling New Zealand’s exports by value in 10 years, while meeting the global demand for high-quality, safe and sustainable food and fibre products,” Mr McClay says.

The two finalists for 2025

No one swallows this Jonah



Jonah the Kune Kune pig performed with Billy Black at the Fred and Eunice Rodie Trust Small Animal Tent during the Egmont A&P Show last weekend.

Best Mates Photography Taranaki.

SPECIALISED LIFTING SERVICES
Fishing Gear - Fasteners
Fibre Ropes - Height Safety
Marine Products
Material Handling
Lifting / Lashing Equipment



T: 06 751 0607
 E: sales@sls.kiwi.nz
 59 Breakwater Rd, NP
 PO Box 3309, Fitzroy, 4341
 www.sls.kiwi.nz



Convert grass into \$

Grow great dairy heifers with us.
 Call Richard 0275 109 667
 or 06 346 5376



NEW ZEALAND GRAZING COMPANY LIMITED

Every day is a growing day www.grazing.nz

NZ FARMERS LIVESTOCK

Bryan Goodin & Sheldon Keech
SERVICING FARMERS
ON THE COAST

Dairy stock - Herds - Heifers - Calves

- Service Bulls • Beef Cattle
- Pigs & Sheep

Weekly Wednesday Stratford Sale

Goodie: 027 531 8511
 Keechy: 027 222 7920

FINER
SPRAYING SERVICES LIMITED

- Crop Spraying
- Pasture Spraying
- Facial Eczema
- California Thistle Spraying

Grant: 027 444 9189
 A/H: 06 278 8451



BOOM SPRAYING SPECIALIST
 Accurate Application - Sound Advice

Central Districts
Field Days
 Site B33 + B34

KINATAI ENGINEERING

All repairs - agricultural manufacturing - structural/heavy fabrication
 Sandblasting & Painting




Troy Whitehead: 0278575747

Our

local knowledge

goes a long way.

Our Taranaki team have over 70 years of combined experience in your region.

Talk to one of our Agri Managers today:

**Taranaki Hub Lead
South Taranaki:**
Ryan Tate
021 900 226

**South Taranaki
Coastal:**
Nicole Stieller
021 900 215

**Inglewood/
North Taranaki:**
Holly Winter
021 900 232

**North Taranaki/
Coastal:**
Sarah Good
021 560 413

**South
Taranaki:**
James Livingston
021 900 307

**Stratford/
East Taranaki:**
Julie Roberts
021 900 316

ravensdown 

New chair of AgriZeroNZ

Rob Hewett has been appointed Chair of AgriZeroNZ, the world-first public private partnership accelerating the development of tools to help Kiwi farmers reduce emissions.

The appointment follows the departure of Sir Brian Roche KNZM who, with the Board, steered the joint venture (JV) through its establishment phase. Roche departed in November to take up the role of public service commissioner.

Announcing the appointment, Economic Growth minister Nicola Willis said Mr Hewett's experience and strategic insights will make a significant contribution to driving forward AgriZeroNZ's work to help farmers reduce emissions while maintaining their competitive edge.

Hewett is a sixth-generation farmer with a 1050ha sheep, beef, wind and forestry operation in South Otago, and holds multiple governance roles across agriculture, horticulture, exporting and energy sectors.

He is currently chair of Silver Fern Farms (retiring this year), Farmlands, Woolworks, Hilton



Rob Hewett.

Haulage, Pioneer Energy, Fern Energy and Rewiring Aotearoa, as well as a Director on T&G Global (NZX: TGG). Hewett won the Deloitte Top 200 Chair of the Year Award in 2023.

The primary sector leader was endorsed for the AgriZeroNZ role by its investor partners (The a2 Milk Company, ANZ, ANZCO Foods, ASB, BNZ, Fonterra, Rabobank, Ravensdown, Silver Fern Farms, Synlait and MPI) and ratified by Cabinet given the Crown's 50 per cent shareholding.

Hewett, who has commenced the role now for a three-year term, said he is excited to join the unique collaboration and foster its focus on helping New Zealand farmers meet the global demand for emissions reduction.

"AgriZeroNZ is a fantastic

example of how a group of disparate companies can come together with the government to solve a problem common for all New Zealand agriculture.

"AgriZeroNZ's work is not only fundamentally important for our collective future licence to operate among discerning global customers, it's also personal for me as our family's farming future will in large part be determined by the success of these activities."

Fraser Whineray, AgriZeroNZ director, said the Board and team are very pleased to welcome Rob.

"It's important that AgriZeroNZ's momentum and progress towards getting practical tools into the hands of New Zealand farmers at the earliest opportunity continues. Rob's mix of extensive governance and hands-on farming experience makes him a great fit for this task."

To date, AgriZeroNZ has committed over \$46 million across a rapidly expanding portfolio of ventures, research projects and trials. This includes a methane-inhibiting bolus, vaccines, novel probiotics, feed additives and low-emissions pasture.



Rebecca and Eli Dravitzki meet a newly hatched chick at the Fred and Eunice Rodie Trust Small Animal tent at the Egmont A & P Show during the weekend.

Do you have any of these symptoms?

- Fatigue
- Foggy brain
- Hot and shitty
- Headaches
- Depression
- Constipation
- Body odour
- Bad breath
- Insomnia
- Smelly wind
- Coated tongue
- Overweight
- Indigestion



Bristol Stool Chart		
Type 1		Separate hard lumps, like nuts (hard to pass)
Type 2		Sausage-shaped but lumpy
Type 3		Like a sausage but with cracks on the surface
Type 4		Like a sausage or snake, smooth and soft
Type 5		Soft blobs with clear-cut edges
Type 6		Fluffy pieces with ragged edges, a mushy stool
Type 7		Watery, no solid pieces. Entirely Liquid

Your Guide to healthy bowels

1 - indicates constipation. We recommend an increase in fibre, hydration and magnesium.

3 - indicates ideal stools which are easier to pass.

5 - shows loose stools. Indicative of an irritated gastrointestinal tract. We recommend digestive enzymes, an increase in fibre and avoiding wheat.

The Poo Brew

NEW IMPROVED POO BREW

A combination of herbal powders to assist in healing the gut, nutritionally supporting the body and cleaning the bowel

Heals the gut

L-Glutamine is an amino acid which heals the gut. It is especially important for brain metabolism as it sustains mental ability. L-Glutamine has been effective in reducing the severity and incidence of very painful diverticulitis. It reduces sugar cravings, helps in fat reduction and in building muscle.



THE HEALTH SHOP

We keep you healthy™

Centre City Shopping Centre Ph: 06 758 7553

Cleans the bowel

Psyllium is proven to increase faecal size and moisture. The most common characteristic of stools following supplementation of psyllium are soft, sleek, and easily passable stools. Compared to other laxatives, psyllium doesn't cause wind. Psyllium goes sticky, pulling off the rubbish from the intestinal wall.

Nutritionally nourishes the entire body

Barley grass has no gluten as it is from the shoots of the barley plant. It is a natural detoxifier and boosts the immune system. It is also very alkalising to the body attributing to reducing acidity in the body which may cause acidosis damage. An imbalance of an acid/alkali ratio in the body may lead to problems like sleep disorders, cardiac pain, fatigue, constipation and fragile fingernails. Barley is a nutrient rich superfood loaded with vitamins such as all the B Vitamins, Vitamin C, Vitamin E and Vitamin K. Barley contains an abundance of electrolytes such as magnesium, phosphorous and potassium, along with other essential minerals such as zinc, iron and calcium. Barley grass is a powerful antioxidant, containing essential amino acids and beneficial enzymes.

Opunake Boat & Underwater Club 2025 Tournament Results



Elite FARM SOLUTIONS
WAIKATO MILKING SYSTEMS

*Proud to support the
 OPUNAKE BOAT & UNDERWATER CLUB*

23 TASMAN STREET
 OPUNAKE
 06 761 7265



**PROUD SPONSORS OF
 THE OPUNAKE BOAT &
 UNDERWATER CLUB**

**VIV SCOTT &
 TARA GIBSON**




Carrfields

Tim Hurley
 027 414 6758

**PROUD TO SUPPORT THE
 OPUNAKE BOAT & UNDERWATER
 CLUB**



OMV

**PROUD TO SUPPORT THE
 COASTAL COMMUNITY**



Graham Payne with his winning snapper.

Another keenly contested tournament this year, with marginal weather to start that improved over the tournament. Viv Scott presented Graham Payne with the top prize for snapper. He was a popular and well-deserved winner as he does so much behind the scenes for the club. The full sections results list is as follows.

(10.970kg), Bryar Parata	Northcott (2.810kg),	Coltart (1.950kg).
(10.820kg), Gary Mellow	Wesley Sayer (2.730kg),	Tarakahi. Ian Fletcher
(9.750kg), Mikey Corkill	Paddy Walsh (2.730kg),	(2.360kg), Paddy Walsh
(9.210kg), Boyd Quinn	Jackson Cathie (2.670kg),	(1.680kg), Anita Powell
(9.130kg), Shaun Neal	John Coltart (2.670kg),	(1.560kg), Dion Kahukaka
(8.870kg), Barry Harvey	Bryan Kirker (2.600kg).	(1.500kg).
(8.800kg), Gareth Collins		
(8.750kg), Matthew Laing	Blue Cod. Mark Neal	Trevally. Charlie Lewis
(8.700kg).	(2.180kg), Grant Hill	(3.460kg), Jackson Cathie
	(2.170kg), Jonathon (Jono)	(2.900kg), Scott Dymond
	OMV Kahawai. Garry Arden (2.100kg), John	(2.870kg), Shaun Neal

McDonalds	Snapper.
Graham Payne (12.350kg),	Robert Shirtcliffe

OPUNAKE BOAT & UNDERWATER CLUB

The Opunake Boat and Underwater Club wishes to acknowledge and thank their sponsors for their generous support of our 2025 tournament:

- Tournament naming rights and Snapper section (\$1000 first place) - Viv Scott and Tara Gibson in conjunction with McDonalds Real Estate*
- Kahawai Challenge Cup and section - OMV Limited*
- Blue Cod section and Sayers Cup - Malcolm Campbell Livestock and TCM Building*
- Gurnard section - Gareth Collins Building & Tim Hurley Livestock*
- Kingfish section - Campbell Contracting*
- John Dory section - Elite Farm Services and Schuler Concrete*
- Tarakihi section - Kane Barrett Livestock & Preston Engineering*
- Tuna section - Taranaki Building Ltd and Agrimec Ltd*
- Trevally section - Coastal Agri*
- Hapuku section - GEA FIL New Zealand*
- Spotted Smooth Hound (Spotty Shark) section - Corkill Systems Ltd*

Also thanks to:

- Shimano sponsored five rod/reel combos with three draws raffle, total value \$4,650.
- Supported by PG O'Rorke Contracting, Mark Frost Electrical, Actionaki, ASB, Wairau Electrical, Swap Contracting, Dunlop Insurance, Magnum Sports, HEL Rimu Electrical
- Early Bird \$1000 draw sponsored by Sandford Carriers & Agfirst Engineering,
- Lucky Snapper Draw \$1000 sponsored by Gibson Plumbing
- Top Boat Winner & Runner-up \$1500 cponsored by Coastal Services Ltd
- Also huge thanks to Auction and Spot Prize goods sponsors including Magnum Sports, Farm Source, Ballance Agri-Nutrients, Gallagher, The Boat Shop, Farmlands, ANZCO, Rabobank, Wanganui Marine, Silverfern Farms, FMG, Mobile Marine, Agrimec Ltd, Mark Frost Electrical & Shimano.

Your support is sincerely appreciated. We look forward to seeing you in 2026!
 Opunake Boat and Underwater Club Inc Committee and Members.



AGRIMEC
 TYRES AND SOLUTIONS

CLOSED MARCH 7 - 10

38 IHAIA ROAD, OPUNAKE
06 761 8999
 FOR ALL EMERGENCY CALL OUTS PLEASE PHONELINCOLN 0273546017



TBL

TARANAKI BUILDING LTD

Local Builder
 Shaun Stanley | Ph 0278 186 385

LICENSED BUILDING PRACTITIONER
 BUILDING CONFIDENCE
mb
 MASTER BUILDERS

Opunake Boat & Underwater Club 2025 Tournament Results



On the right Sean Luttrell with Riki Harrison holding up Sean's winning Hapuku. On the left is Bryan Kirker with his second placed Hapuku and in the middle Geoff Campbell with the fourth placed Hapuku.

(2.730kg).
 Gurnard. Alan Barraclough (0.990), John Coltart (0.950kg), Matthew Laing (0.870kg), Dion Kahukaka (0.870kg).
 John Dory. Stephen Coltart (2.420kg), Steve Sowerby (2.240kg), John Coltart (2.230kg), Graham Payne (2.050kg).
 King Fish. Dion Kahukaka (17.840kg), Jackson Cathie (17.090kg), Martin Weir (15.640kg), Michael Taylor (14.410kg).
 Spotty Shark. Lex Williamson (8.840kg), Garry Northcott (6.670kg), Tony Moir (6.010kg), John Corban (5.520kg).
 Hapuka. Sean Luttrell (33.840kg), Bryan Kirker (14.900kg), Steve Sowerby (7.740kg), Geoff Campbell (7.120kg).
 Prize-giving was held at Sinclair Electrical & Refrigeration Event Centre on Saturday evening. Random spot prizes were drawn out throughout the evening and auctions for various sponsored goods provided great entertainment as they were keenly contested.
 The AgFirst and Sandfords sponsored Early Bird Entry draw was won by Dave Wakeling, the Gibson Plumbers Lucky Snapper draw was won by Gordon Beekman and the Shimano Rod and Reel Combo multi-draw raffle was won by Sean Luttrell, followed by Martin Weir and Jono Arden.
 The ever keenly contested Coastal Services Top Boat Trophy was won by John Coltart and his crew on his boat Anne Sirah with

runner up Garry Northcott on E'Fish'n'c.
 The club sincerely thanks those that donated fish to the local Foodbank, plus we thank all sponsors, supporters and entrants for their participation this year, due to the pressure of other tournaments in the January and early February period plus the often unreliable weather patterns at this time of year. The committee is considering moving the tournament to early April in 2026, we welcome your feedback.
 OBUC Committee

Coastal Agri
Your Performance Partner

Proud to support the
Opunake Boat & Underwater Club

97 Tasman Street, Opunake
Ph 06 761 7079

DO YOU WANT ACTION?

PROUD TO SUPPORT THE OPUNAKE BOAT & UNDERWATER CLUB COMPETITION

FREE PHONE 0800 824 836

KANE BARRETT LIVESTOCK

PROUD TO SUPPORT THE OPUNAKE BOAT & UNDERWATER CLUB

027 4036469 | kanebarrettlivestock@outlook.com

Dunlop Insurance

FOR ALL YOUR INSURANCE NEEDS

Personal • Rural • Commercial

100% Taranaki owned & operated

Ph: 06 278 6856 | Mob: 027 555 2080 office@dunlopinsurance.co.nz

48 Victoria St. Hawera

gibsonplumbing LTD.

CERTIFIED

Plumbing, Gasfitting and Drain Laying

Plus! Roofing, Wood Fires and other Heating Solutions

06 761 8757 027 445 7164
gibson.plumbing@xtra.co.nz

Lower Milk Solids Damage Improve Milk Cooling

MILKFLOW

The CSL Milkflow Milk Pump Controller improves returns by reducing milk solids damage and optimising primary cooling.

ROTARY LOBE PUMP

Combined with the CSL Milkflow Controller, the CSL Lobe pump accommodates the large wash volumes required in today's dairy sheds without compromising milk quality.

Corkill SYSTEMS LTD
Specialists In Dairy Automation Solutions

Contact us
0800 10 7006
www.corkillsystems.co.nz

Barbwire Fight Club turns pro

The Barbwire Fight Club is turning pro. An initiative of James (Batman) Langton and Barbwire Boxing the Fight Club held three livestreamed events last year where votes from those watching the fights, either in person or online decided who the winners were.

Last year's events were held in Opunake and Stratford and included a National Women's heavyweight boxing matchup between Maria Hunt and Sequita Hemingway. This year there will be six livestreamed events at different centres around the lower North Island with a total purse of over \$100,000. All fighters taking part will be paid win, lose or draw, and will accumulate points during the series to determine the champion and the prize money that comes with it. There will be six bonus prize winners.

"There's nothing like this in the world of boxing," says James. "I firmly believe this is what New Zealand boxing needs. If this fails, New Zealand boxing is back to Square One."

He said BFC events had been attracting online interest from both New Zealand and overseas viewers.

The new pro initiative



James (Batman) Langton (third from left back row) with some of last year's Barbwire BFC boxers.

BFC-104 was launched at an event held at the Ngamotu Golf Club in New Plymouth on February 13.

The main fights will have six two-minute rounds while the under-cards will have four rounds of two minutes

each.

"We want this to be short, sharp and explosive for the viewers," says James.

"We don't know how this is going to roll. It's new and exciting."

The corporate tables will be gone and all tickets will be general admission. The weigh-ins will be on the same day as the fights and boxing rules will apply.

The evening's MC Trent Kiri said the last year's events had seen 35 fighters from 12 different gyms as well as independent fighters take part.

James says he hopes to see the same interest this year.

"The reason it's called Fight Club is because we want the clubs to put up their best fighters."

James says he can only contract about 36 fighters in total. Fighters must be aged 18 years and over and he is asking all fighters to already have four or five fights behind them.

"There has already been a

lot of interest so far which is encouraging," he said.

The first event will be in Palmerston North on April 12, with events in Cambridge, Whanganui, Porirua and Hastings before it "comes back to Taranaki," and finishes at Stratford.

James said he would begin preparing "next week" for the first event.

Barbwire Boxing events manager Rebecca Wallis says that in line with Barbwire Boxing's rural origins they wanted to make it more accessible by holding events in towns other than the main centres.

Earlier that evening James spoke about his own boxing journey which began as a 36 year-old farmer at a time when the dairy payout was \$3.50kg/MS in the middle of a drought and the bank was wanting to sell the family farm. An ad in the Opunake and Coastal News led him to Terry Simpson and the Pungarehu Boxing Gym.

After a series of early defeats,

he went on to beat the David Tua-coached Monty Filimaea in Opunake for the NZNBF cruiserweight title only to lose it to Monty Betham, and later to win the Pro-Box New Zealand Heavyweight title in Hawera.

The evening also included the Barbwire club prizegiving. Sandra Gargan was Club Person of the Year while Fighter of the Year went to Bobby Katene, the only fighter to have featured in all three BFC events last year. The KO of the year went to Kaelan Gray in his fight against James McDonald, the fan vote for Fight of the Year went to Charlie Ainsworth v Ngatariki Ropitini, and Pro Fight of the Year went to the heavyweight title matchup between Maria Hunt and Sequita Hemingway. The BFC Fight of the Year was awarded to the Lennox Benjamin v Jerry Saua fight.

BFC-PRO

NEW ZEALAND'S PROFESSIONAL FIGHT SERIES
EVENT DATES

2025	APR 10th	Palmerston North
	MAY 15th	Cambridge
	JUL 10th	Whanganui
	AUG 21st	Porirua
	SEP 25th	Hastings
	OCT 30th	Stratford

BARBWIRE®
FIGHT CLUB

WWW.BARBWIREFIGHTCLUB.COM

Woodward's
FIREWOOD

Animal Bedding For
Stand Off Pads
Calf and Goat Sheds
Wintering Barns

— Untreated ground up waste wood —
— Raw material stockpiled then ground to order —
— Pick up or delivered to your farm —
— 9m³ truck loads —
— 65m³ truck loads —

06 755 2047

124 De Havilland Drive, Bell Block • office@woodwardsfirewood.co.nz
www.woodwardsfirewood.co.nz

Hickman and Nickel dominate Minisprint racing



Daniel Nickel (#18) won the Taranaki round of the Oval Superstars Tour.

It was the Duane Hickman and Daniel Nickel show in the Minisprint class at the Pick A Part sponsored event at Five Star Liquor Stratford Speedway on Saturday night (February 15). The class was racing for two events with a large field of twenty competitors and despite some promising drives from the likes of Erin Uhlenberg who was using the outside line to make passes, it was Hickman and Nickel that would fill the top two steps of the podium, twice.

First up was the King of the Mountain Champs, a

three-heat deal that saw competitors accruing points from their finishing positions in each race. Craig Mason nabbed a win in race one from a pole position start but it was Hickman who impressed to finish fourth from a grid fourteen start. He then went on to place second in race two from grid five before coming home fifth in race three from grid eleven. Hickman's ability to move forward in each race saw him win the champs by a three-point margin from Nickel who had recorded seventh and two thirds.

Mason was third overall.

The Taranaki round of the Oval Superstars Tour was run over one race, the winner of the King of the Mountain champs choosing grid one or two and the rest of the field being set in descending order of points from the earlier event. Hickman elected to start from grid two which put Nickel on grid one, Mason on three and Erin Uhlenberg on four. At the race start Nickel beat Hickman to turn one and stayed in the lead for the duration of the race to finish first ahead of Hickman with Mason again taking

third place.

Saloons raced for their Heritage Shield with three heat races setting the grid positions in the one race final. Heat races were won by Thomas Korff, Craig Korff and Paul Hosking. T.Korff lead the final from start to finish after starting from grid two. Bradley Korff was closing in on him in the latter stages of the race and was close enough to make a dive up the inside through turn three on the last lap but was not successful and finished second. C.Korff

completed the Korff trifecta for the podium in third place.

First year stockcar drivers had their chance at glory when they raced for the Wayne Trott 1st Year Driver Memorial in the first race. Cory Symes led this race from start to finish and will now have his name etched on the same trophy that his father Kylee won fifteen years ago.

The remaining Stockcar races were won by Codey Wilton, Ryan Nolly and Cory Symes. Both grades of Ministocks completed

the race program with wins in the Adult class going to Brayden Shaw (2) and Katelyn Symes. Youth Ministock races were won by Troy Erkes, Jamie Walsh and Cruz Selby.

Speedway takes a break for a couple of weeks now with the next event being run on March 1 and featuring the Under-23 Stockcar Champs New Zealand Minisprint Grand Prix along with the Taranaki Streetstock and Saloon Champs.

Jarrod MacBeth



Cory Symes won the Wayne Trott Memorial for First Year Stockcar Drivers.



Thomas Korff (#16) narrowly beat Bradley Korff to win the Saloon Heritage Shield.

NEXT EVENT
SATURDAY MARCH 1ST
NEW ZEALAND MINISPRINT GRAND PRIX
UNDER 23 STOCKCAR CHAMPS
 Event Sponsored By:

 MOUNTAIN MOTORS TARANAKI SALOON CHAMPS
 HOLDIN HEAVEN TARANAKI STREETSTOCK CHAMPS
 PLUS: STOCKCARS AND MORE
Gates Open 4:00pm - Racing Starts 6:00pm
 



A great night out for the whole family!

Admission Prices @ Gate
 Adult \$25, Child \$10 (14 & Under)
 Family \$50 (2 Adults & up to 4 Children)
 Student/Pensioner \$20 (Must Present ID)
 Under 5's FREE

Tickets Cheaper Online @ Flicket

Please visit our website or find us on Facebook to find more information on each race meeting including pricing, what's coming up each week and to see online ticketing options.

www.stratford-speedway.co.nz



Proudly Sponsored by




Call us on 06 761 7016

TO SEE HOW THE

OPUNAKE & COASTAL NEWS

CAN HELP YOUR ADVERTISING REACH YOUR TARGET AUDIENCE

FOR ADVERTISING THAT WORKS

OPUNAKE & COASTAL NEWS



Back to Stratford for Opunake artist

Opunake artist Merv Turner says that with 45 paintings his latest exhibition in Stratford is one of his larger ones.

There were 40 paintings in his last exhibition *Turner Round the Mountain* which showed at the Lysaght Watt Gallery in Hawera last year.

The doors opened last Monday evening (February 17) at the vacant shop space owned by New Zealand Farmers Livestock Limited on Broadway in Stratford for the opening of his latest exhibition.

"I wanted to have an exhibition in Stratford so I was looking for an empty shop and came across this one," says Merv.

He says empty shops can be as good as galleries when it comes to holding exhibitions.

"I did have an exhibition in Stratford 18 years ago, and that was the same thing, in an empty shop," he said.

"This one's remarkable, with its lighting and the wall, and the wonderful people who let me have it."

Equally adept at both oils and watercolours Merv



Merv Turner at his new exhibition.



FOUNDATION

HAWERA DROP IN SESSIONS

Toi Foundation staff will be available for drop in sessions at the Foundry in Hāwera every Wednesday 11am – 3pm

Our team will be able to assist you with any funding, application or reporting queries

No appointment necessary

Where: The Foundry, 130 High Street, Hāwera 4610



BEV'S MAGNIFICENT EUROPE RIVER CRUISE

ONLY TWO CABINS LEFT!



Set sail on this iconic 16 day sailing with charming stops along the way.

Watch the world go by from your Avalon suite with cruising's only Open-Air Balcony - with nothing between you and the view.

When you want to explore pick how you play with **exclusive and included shore excursions.**

Departs New Plymouth 23 September 2025
FROM \$20,950 PER PERSON TWIN SHARE*
Budapest to Amsterdam

Helloworld Travel Strandon

06 757 5666

487b Devon Street East, Strandon, New Plymouth

strandon@travel.helloworld.co.nz



*Terms & Conditions apply: This tour has a maximum of 18 people. See in store for more details.

Back to Stratford for Opunake artist



Murray McEwan gazes intently at Merv's artwork.

Whangamomona.

studied painting and drawing at the Elam School of Fine Arts and has been a full-time artist since 1986. His works have been exhibited across the North Island, and he has taught classes in oil and watercolour painting.

British landscape scenes are included in this latest exhibition alongside some closer to home like the Tangarakau Gorge and Middletons Bay. "Bygone Days Pihama" depicts a disused cowshed.

"There are so many of these abandoned cowsheds in Taranaki, each one with its own characteristics," Merv's caption reads. "One could make a theme of them."

Other works include a self portrait "when I was a little younger," and with Easter coming up two works, Jesus Christ Crucified for Us and Jesus Christ Risen and Alive Today reflecting the crucifixion and resurrection of Jesus Christ.

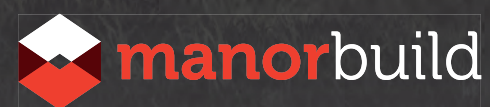
Whangamomona is a pen and wash work of a street scene in that iconic back country settlement. It was from an old sketch made on the first of many trips along the Forgotten Highway, at a time when there was still a train service running there. Under the artwork copies of A Back Country Dictionary, a book written by his wife Heather are for sale.

The exhibition is open Monday-Friday until March 7. Merv is there all that time and more than happy to discuss his works with anyone who wants to see his works or drop in for a chat.



We're bringing something new to Central District Field Days!

Come and see our Okato display home at stand ENT7 / 8 just inside the main entrance. 13th to 15th of March.



Vintage Hay Day is back

The Taranaki Machinery Club is holding their normally Biennial Vintage Hayday on Saturday March 8 and Sunday March 9 on the Honnor farm at 331 Waitara Road, Brixton from 10am-4pm daily.

There hasn't been a Hayday since 2019, with the onset of Covid etc so this weekend is long overdue

This is the fourth Hayday to be held on the Honnor's Farm

The Vintage Hayday supports several charities throughout the Taranaki region but the main charity this year is the Taranaki Cancer Society.

Bruce Polly will have a team of his wonderful Clydesdale Horses working away doing different jobs, so come and meet Royal, Olivia, Mitchell and Mally.

There will also be traction engine and trailer rides, market and food stalls,

Morris Dancers, and music supplied by John Boy Entertainment.

The Kids Corner and Petting Zoo proudly sponsored by Brenda and Pete, Huirangi Valley Farms and the Honnor family - heaps of animals including Clover the Speckle Park, pony, calves, lambs, goat, alpacas, pigs, rabbits, chickens, ducklings, plus so much more, with lots of cuteness and cuddles.

Bring a picnic. There are plenty of tables, blankets and umbrellas available.

Eftpos is available at the gate - \$10 adult, Kids under 14 and over 80s free.



Haystacking at the 2017 Hayday.

CHURCH NOTICES



Church Services - Manaia, Kaponga, Opunake, Pungarehu, Okata, Oakura

Opunake Co-operating Parish

Havelock Street, Opunake - St Pauls - 9.30am every Sunday
Rahotu - Wesley - 11am first Sunday of the month

Okato Co-operating Parish

Okato - St. Paul's - Sunday Service every 1st and 3rd Sundays of each month, 10.00am
Oakura - St. James - Sunday Service every 2nd and 4th Sundays of each month, 10.00am
Mid-week open church - Okato - St. Paul's - Pew for You, every 3rd Wednesday of each month, 4.30pm-6.00pm

Opunake Catholic Church

St Martins, Pungarehu: Temporarily closed - no Masses
Our Lady Star of the Sea, Opunake: 10am every Sunday

Other areas

Sacred Heart, Manaia - Temporarily closed - No Masses
St Joseph's, Hawera - Every Sat at 5pm; Every Sun at 9am
St Patrick's, Patea - 4th Sunday of month; 11.00am
St Francis de Sales, Waverley - 2nd Sunday of month; 11.00am

St Patricks Catholic Church, Kaponga

Sunday Mass 8.45am.
Thursday Mass 10.00am (subject to change).

St Patricks Catholic Church, Okato

Saturday Vigil 6.00pm - weekly

The Wave

Pentecostal Church 64 Domett St, Opunake
Sunday Services 10.30am
Women's Group 10am Tuesday
Men's Group 7pm Wednesday
Come along or contact
Belinda Philp
027 935 6191

St. Barnabas Anglican Church

141 Tasman St, Opunake
Sunday Services 10am
Communion 2nd, 3rd & 4th Sunday
Prayer & Praise 1st Sunday
Every 5th Sunday all 4 churches gather for a Combined Service

Okato Community Church

Meets 10.30am Sunday at Hempton Hall.
Everyone welcome

St John's Community Church. Kaponga

Cnr West and Egmont Streets.
Sunday Services 10.30am followed by morning tea

Manaia Union Fellowship

Terou St. Manaia.

Meet 10am every 3rd Sunday of the month with communion

Friend & Fellowship Group

Thursdays @ Manaia

Support our Faith and support each other with Prayer and Bible study

Encouraging interactive discussion and Praise
All are welcome

We would love it if you could come

Rodney & Val 274 8550 or 0272384187

St. Andrew's Presbyterian Church

90 Regan St., Stratford,

9:00am Sunday: Breakfast and Study

10:30am: Breakfast is followed by "Coming Together Worship Service"

Thursday: Study Group at 2 pm at 96b Brecon Rd., Stratford.

Contact Rev. John Mattock 027 2039799

HAY DAY 2025

TARANAKI ANNIVERSARY WEEKEND
SAT MARCH 8 & SUN MARCH 9

331 Waitara Rd, Brixton
10am-4pm
\$10 Adult

Under 14's and Over 80's are free



Clydesdale Horses will be working away doing different jobs.



NEW PLYMOUTH BOYS' HIGH SCHOOL
TE KURA TAMATANE O NGĀMOTU

Boarding Open Day

Friday 22 March



Join us at our Boarding Open Day on Friday 22 March, starting at 10.15am.

For your invitation, please register at:
NPBHS.SCHOOL.NZ

Luke Goodman (Opunake),
Head Boarder Jack Wiseman (Piopio),
and Will Harvie (Hawera).

KIA TŪ HEI TAUIRA | BE THE EXAMPLE

Local news, local people, local businesses, local sport, local arts and events.
Delivered free around the mountain every fortnight.



editorial@opunakecoastalnews.co.nz
ads@opunakecoastalnews.co.nz
accounts@opunakecoastalnews.co.nz

Phone: 06 761 7016

23 Napier St, Opunake

OPUNAKE & COASTAL NEWS

Next Issue

13th March



MOVING?

Subscribe to the Opunake & Coastal News and we'll post you a paper as soon as it's out!

06 761 7016

OPUNAKE & COASTAL NEWS



GALA DAY

Ōpunakē High School

10am - 2pm - Free event

A traditional Gala event suitable for the whole whānau and the wider Ōpunakē community to attend

10am - 2pm: Event Check-in Open in school hall

Check in for the Centenary and collect your lanyard for the weekend
Merchandise & Centenary Book available to purchase

School stalls (80% of event) will be taking gala tokens only as method of payment.
These stalls will be clearly marked.

Tokens can be purchased from the event check-in desk in the school hall (cash/EFTPOS)

There are some external providers who will accept cash/EFTPOS

10.30am | 11.30am | 12.30pm: School tours depart from the tennis courts

11am - 2.30pm: Present vs Past students sports matches

11am:	Netball - Womens	Tennis Court
11am:	Basketball - Mens	Gym
11am:	Rugby 10s - Womens	Field
12noon:	Basketball - Womens	Gym
12noon:	Rugby 10s - Mens	Field
12noon:	Football - Mixed	Field
1.30pm:	Hockey - Mixed	Field
1.30pm:	Volleyball - Mixed	Gym
4pm:	Surfing	Ōpunakē Main Beach

11am - 1pm: Year/Decade Photos in school hall

11am:	1940s
11.10am:	1950s
11.20am:	1960s
11.30am:	1970s
11.40am:	1980s
11.50am:	1990s
12noon:	2000s
12.10pm:	2010s
12.20pm:	2020s
12.30pm:	Past staff, BoT
12.40pm:	Generational photos (any families that would like to get a photo together)
12.50pm:	Te Haumoana reunion crew

11am: Live Performing Arts on the School fale

11am:	Te Haumoana Flash Mob Join in for waiata & poi
12noon:	Moemoeā
12.30pm:	Mr Jared Hill & friends

1.00pm: Mass 100-year photo, on the school field.

Everyone present at the Gala is invited to participate in a Centenary photo, please begin gathering at 12.45pm

1.15pm: Community Walk, Ōpunakē Loop Track

Please gather on the tennis courts



72 Tasman Street, Opunake | www.everybodystheatre.co.nz

<p>Widow Clicquot 1hr 31mins M Thu 27 Feb 7PM</p>	<p>Bridget Jones: Mad About the Boy 2hr 5mins TBC Fri 28 Feb 7PM</p>
--	---

Widow Clicquot
Drug use & sex scenes | 1hr
31mins | Rated: M
Thu 27 Feb 7PM

Bridget Jones: Mad About the Boy
Offensive language & sexual references | 2hr
5mins | Rated: TBC
Fri 28 Feb 7PM

2025
Concert
Season

GLORIA

GIACOMO PUCCINI

Ars Nova Choir
Ars Antiqua Chamber Orchestra
Christopher J. Luke *director*

Saturday 1 March 2025 | 2.00pm

St Andrew's Church | Liardet Street

Admission: \$15⁰⁰ | Students: \$5⁰⁰
Tickets at the door from 1.00pm | Cash & Eftpos

Some of the regular services:

NZ POST, NZTA & STATIONERY
Monday to Friday, 8.30am to 5pm

COASTAL PRINTERS
Monday to Friday, 8.30am to 5pm

TAYLOR DENTAL PRACTICE
Every Thursday

LISA KEEN AUDIOLOGY
Every 2nd Wednesday

ACTIVE + PHYSIOTHERAPY
Every Monday and Thursday

TARANAKI CHIROPRACTIC
Every Wednesday & Friday

COUNSELLORS
Alex Jones 021 0816 3248
Karen Anderson 021 213 8513
Robert Shaw 022 020 9779

MATTHEWS OPTOMETRISTS
1st Thursday of every month

TARANAKI PODIATRY
Every 2nd Wednesday of the month

HIP
Every Monday and Tuesday
Via an appointment from the
Opunake Medical Centre

FOOD BANK
Every Thursday 11-1pm

DID YOU KNOW?
Coastal Care offers for hire private, well-appointed room's for meetings, training opportunities & social gatherings.

Permanently residing in the building are:

OPUNAKE PHARMACY,
OPUNAKE MEDICAL CENTRE,
ST. JOHN AMBULANCE,
PLUNKET & TDHB SERVICES.

For a full list of services & happenings here

Find us on
Facebook

or visit us at www.coastalcare.co.nz
CONTACT ARETHA LEMON
Facility Manager on 06 761 8488

Advertise your event in the
Opunake & Coastal News

Call our sales team on
06 761 7016

What's On Listings

What's On Listings

ONGOING

Movies at Everybodys Theatre in Opunake: Playing several days and nights each week. Refer timetable in newspaper.

MONDAYS: The Barnabas Centre - St Barnabas Church Hall, 141 Tasman Street Opunake: Each Monday 10 am - 12:30 pm. Information call Jenny 7618080 or Glenys 6558025

Beginners Social Dance Classes: Central School Hall, New Plymouth, 7pm.

TUESDAYS

Opunake Walking Group: Every Tuesday 10am. Meet outside Club Hotel on Havelock St. Phone Margaret 027 477 5600 for more info if needed, or just turn up.

Pungarehu Golf Club Twilight: Tee-off between 4.30 & 6.30pm.

Opunake District RSA: Meet 1st Tuesday of every month at 5.30pm at the Opunake Fire Station. Financial Members are welcome to attend.

WEDNESDAYS

Coastal Young Farmers: Meet 2nd Wednesday of every month at 7pm at Butlers Reef Bar & Cafe, Oakura.

Lisa Keen Audiology at Coastal Care, Opunake: Wednesdays 9am - 5pm, for an appointment call 027 591 4222 - 0800 555 676

Okato & District Historical Society open every Wednesday: At the Okato Community Trust Hall, 47 Cumming St, Okato. phone Meg on 06 752 4566.

Opunake Embroiders Guild: Meet 2nd and 4th Wednesdays of the month, 10.30am-3pm at the Opunake Business Centre, Napier St, Opunake. Just come along or phone Sheryl 06 761 8769.

Okato Market: In Hempton Hall, Okato 4pm to 5.30pm.

Free singing experience with Taranaki Harmony Chorus: Meet every Wednesday at Inglewood Mamaku Centre, 7-9.30 pm Phone Helen 021 296 0700.

THURSDAYS

Egmont Euchre Club: Every Thursday 1pm at the Opunake Bowling Club. Inquiries, 06 761 8337 or 06 761 8607.

Taranaki Country Music Hall of Fame, Manaia: Running every Thursday night from 7.30pm, 11 Surf Highway, South Road, Manaia.

FRIDAYS

Eltham Business Association Friday Markets: 9:30am to 1pm, Carpark of Touch Point, High Street, Eltham.

Beginners Social Dance Classes: Oakura Hall, 6.15pm.

AT THE CLUB HOTEL THIS WEEK:

Monday: Burger special \$15, Happy Hours 3pm- 6pm; **Tuesday:** Pork ribs \$20, Pool Tournament 7pm; **Wednesday:** Pizza night 2 for \$24, Poker night \$30 buy in; **Thursday:** Steak night for \$20, Poker Night \$27 buy in; **Friday:** Pensioners lunch \$15, Lamb Shank \$20; **Saturday:** Chicken Schnitzel \$20; **Sunday:** Roast night \$20 Complimentary dessert for dine in customers.

NOVEMBER 2 - MAY 11, 2025

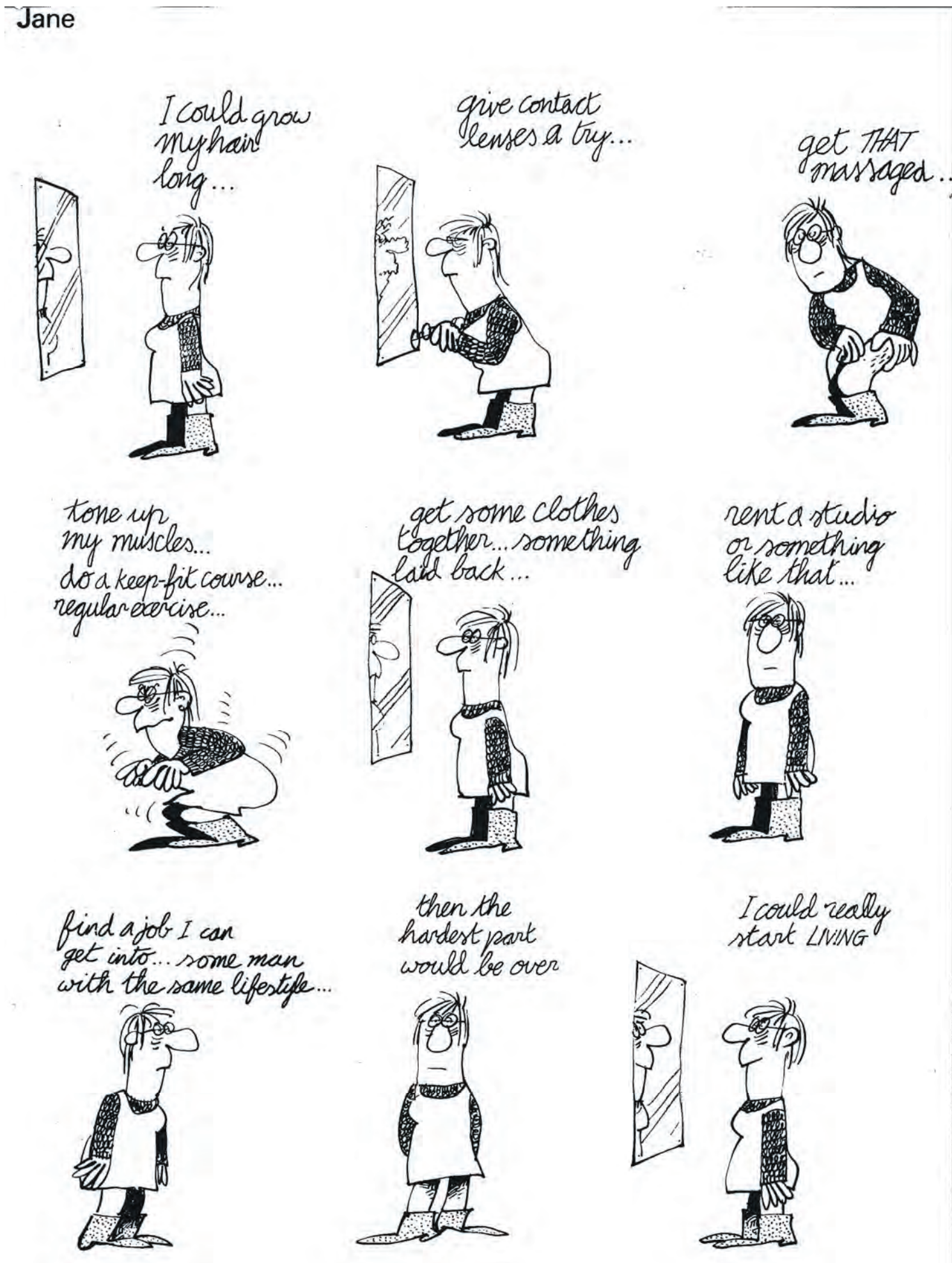
Lalaga Exhibition: At the Govett Brewster Art Gallery, New Plymouth.

FEBRUARY 13 - MARCH 24

Journeys - Our Way Exhibition: At the from out of the blue studio gallery, Halse Plac4e, Opunake..

MARCH 1

Ars Nova Choir presents Gloria: St Andrews



Church, New Plymouth, 2pm.

MARCH 3

Opunake & District Business Association monthly general meeting: Opunake Business Centre, 5.30pm.

MARCH 8-9

Taranaki Vintage Machinery Club Vintage Hay Day: 331 Waitara Rd, Brixton. See ad for details.

MARCH 12

Toi Foundation staff will be available for drop-in session at The Foundry, Hawera from 11am-3pm every Wednesday.

Taranaki National Art Awards AGM: Sinclair Events Centre, Opunake. 6.30pm.

MARCH 17

Grey Power South Taranaki AGM: Senior Citizens Hall, Hawera, 10am.

MARCH 19

Toi Foundation staff will be available for drop-in session at The Foundry, Hawera from 11am-3pm every Wednesday.

MARCH 22

New Plymouth Boys High School Boarding Open Day: See ad in this issue

MARCH 29

Cancer Society Relay for Life: TET Stadium & Events Centre, Inglewood. 10.30am-10.30pm

SECOND WIND SECOND HAND SHOP

Selling clean quality items at reasonable prices. Specialising in weird stuff, cool junk.

Open Tues - Sat 10am-2pm
Motorua Shopping Centre | Text 022 184 3796

The next issue of the Opunake & Coastal News is March 13. Call us to be in it.

PUBLIC NOTICES

Taranaki National Art Awards

Annual General Meeting

Wednesday 12th March at 6.30pm, in the boardroom at the Sinclair Electrical Events Centre, Tasman Street, Ōpunakē.

We'll celebrate the success of last year's national creative showcase, while reviewing performance, passing annual reports, electing officers and setting dates for 2025.

All welcome to attend and contribute. Be curious, come along and meet the awesome team who make the magic happen!

For more information email: contact@taranakiartawards.co.nz
Or phone Megan Symons : 0275007722

KAPUNI HALL

Available for hire

For more information
Ph Olivia 027 261 5665

editorial@opunakecoastalnews.co.nz
ads@opunakecoastalnews.co.nz
accounts@opunakecoastalnews.co.nz

Phone: 06 761 7016
23 Napier St, Opunake



FOR SALE

AB & DM SYBRANDY CONTRACTING LTD - Available Now - Firewood, Screened Topsoil & BRANDY'S BOTANICALS BARN-Indoor Plants, Home & Giftware, Seeds & More. 6m3 Split Pine \$480.00, 6m3 Split Mac \$600.00 supplied & delivered Hawera, Normanby, Manaia areas - other areas may incur small delivery fee. Orders and Payment can be made by phoning Andy 0274456464 or calling into Brandy's Botanicals Barn-15 Livingston Rd Hawera.-WINZ Quotes, Afterpay & Eft-pos available at the Barn.

ROUND BALE Silage available. Milking quality. Ph Alistair 027 3844 822.

FIREWOOD. Totara, very reasonable. Text or phone Graeme 021 428 002.

TO LET



HUGHSON & ASSOCIATES
Accounting for the future, today
23 Napier Street, Opunake

Office Rooms/ Board Room available

Long term, short term or casual basis
Building has kitchen facilities, wheelchair access, cleaning services and plenty of parking on Napier Street or at rear of building on King Street.

Inquiries to Clare Moss - Ph 06 278 4169
clare.moss@hughson.co.nz

TRADES & SERVICES

GAM

Compact Tractor Contractor

For all your small tree cutting down and chipping
Average to large garden rotary hoeing
Lifestyle block paddock topping and mowing
Horse paddock harrowing
Gravel driveways and raceways graded

Grant McGilvary

☎ 027 266 1555
✉ tractor1boat2@gmail.com

HAWERA BUDGET Advisory Service. Wed 9am to 12pm. Coastal Care, Opunake by appointment. Starting Feb 8th 2023 and fortnightly thereafter. Contact us by phone: 0800 333 048 (free from mobile). Facebook page: Hawera Budget Advisory Service. Email: info@hawerabudget.co.nz

BUILDER. Hay Barns, Garages, Sheds, Roofs, Gutters, Bathrooms. All building maintenance. Local builder. Dion 021 027 06657.

CARPETS second hand, large selection After Disaster Ltd 223 Devon St West, NP. Phone (06) 769 9265

GRAZING

GRAZING AVAILABLE
Phone Richard 027 510 9667.

GARAGE SALES

KAPONGA CAR BOOT SALE 15 Egmont Street. Sat 8th March 9 - 2pm
Vintage treasures, plants, produce, furniture, tools, art & much more. *No fee for sellers.* Free mini putt.



The next issue of Opunake & Coastal News is due out on March 13.

The Opunake & Coastal News is distributed free to every home and business within the rural area, bounded in the north by the New Plymouth City border, extending east to Egmont Village and around to the edge of Stratford, south to the border of Hawera township and inland to Kaponga and through Eltham.

This newspaper is subject to NZ Press Council procedures. A complaint must first be directed in writing within one month of publication to the Opunake & Coastal News email address. If not satisfied with the response, the complaint may be referred to the Press Council, PO Box 10879, The Terrace, Wellington 6143. Or use the online complaint form at www.presscouncil.org.nz. Please include copies of the article and all correspondence with the publication.

Grey Power

NEW ZEALAND FEDERATION INCORPORATED



GREY POWER SOUTH TARANAKI

Annual General Meeting

17th March, 10am

Senior Citizens Hall

81 Victoria Street Hawera

Guest Speaker: Aaron Foley

- From Halliwells

All welcome

Jackie Morrow, Secretary



Next Meeting is on
Monday March 3, 2025
at 5.30pm

Hughsons & Associates Boardroom at the
Opunake Business Centre, 23 Napier St, Opunake
(opposite the Coastal Care Medical Centre)

WANTED TO BUY

KANE BARRETT LIVESTOCK

CALF MILK WANTED

Any volumes - 24/7

027 4036469 | kanebarrettlivestock@outlook.com

WANTED TO BUY:

OLD NZ PRE-DECIMAL BANKNOTES
Also OLD BOTTLES and stone crocks. Private collector. Top prices paid.
Ph Paul 021 141 8029

SCRAP METAL - for all scrap metal Taranaki wide, give us a call. Molten Metals (06) 751 5367. www.moltenmetals.co.nz



THE NEWSPAPER TARANAKI LIKES BEST



OPUNAKE & COASTAL NEWS

Publication Dates for 2025

JANUARY							FEBRUARY							MARCH							APRIL							
S	M	T	W	T	F	S	S	M	T	W	T	F	S	S	M	T	W	T	F	S	S	M	T	W	T	F	S	
			1	2	3	4							1							1				1	2	3	4	5
5	6	7	8	9	10	11	2	3	4	5	6	7	8	2	3	4	5	6	7	8	6	7	8	9	10	11	12	
12	13	14	15	16	17	18	9	10	11	12	13	14	15	9	10	11	12	13	14	15	13	14	15	16	17	18	19	
19	20	21	22	23	24	25	16	17	18	19	20	21	22	16	17	18	19	20	21	22	20	21	22	23	24	25	26	
26	27	28	29	30	31	23	24	25	26	27	28	23	24	25	26	27	28	29	27	28	29	30						
														30	31													
MAY							JUNE							JULY							AUGUST							
S	M	T	W	T	F	S	S	M	T	W	T	F	S	S	M	T	W	T	F	S	S	M	T	W	T	F	S	
				1	2	3	1	2	3	4	5	6	7	1	2	3	4	5						1	2			
4	5	6	7	8	9	10	8	9	10	11	12	13	14	6	7	8	9	10	11	12	3	4	5	6	7	8	9	
11	12	13	14	15	16	17	15	16	17	18	19	20	21	13	14	15	16	17	18	19	10	11	12	13	14	15	16	
18	19	20	21	22	23	24	22	23	24	25	26	27	28	20	21	22	23	24	25	26	17	18	19	20	21	22	23	
25	26	27	28	29	30	31	29	30	27	28	29	30	31	24	25	26	27	28	29	30	24	25	26	27	28	29	30	
																					31							
SEPTEMBER							OCTOBER							NOVEMBER							DECEMBER							
S	M	T	W	T	F	S	S	M	T	W	T	F	S	S	M	T	W	T	F	S	S	M	T	W	T	F	S	
1	2	3	4	5	6	1	2	3	4	1	2	3	4	1	2	3	4	5	6									
7	8	9	10	11	12	13	5	6	7	8	9	10	11	2	3	4	5	6	7	8	7	8	9	10	11	12	13	
14	15	16	17	18	19	20	12	13	14	15	16	17	18	9	10	11	12	13	14	15	14	15	16	17	18	19	20	
21	22	23	24	25	26	27	19	20	21	22	23	24	25	16	17	18	19	20	21	22	21	22	23	24	25	26	27	
28	29	30	26	27	28	29	30	31	23	24	25	26	27	28	29	28	29	30	31									

DEADLINES:

EDITORIAL - 5pm Thursday prior to publication.
DISPLAY ADVERTS - 5pm Friday prior to publication.
CLASSIFIEDS - 3pm Monday prior to publication.

Adverts and readers' contributions may be phoned, emailed, posted or dropped into the Opunake & Coastal News at 23 Napier St, PO Box 74, Opunake.

Phone (06) 761-7016 or a/h (06) 761-8206, Email: ads@opunakecoastalnews.co.nz

www.opunakecoastalnews.co.nz
Phone (06) 761-7016

meritcars

with distinction

VISIT WEBSITE MERITCARS.CO.NZ

493 DEVON STREET EAST, STRANDON, NEW PLYMOUTH
CALL US TODAY 06 281 1925

ALL ON ROAD COSTS INCLUDED PLUS TANK OF FUEL. ONE STOP SHOP FOR FINANCE, WARRANTIES & FREE SMILES

2012 Toyota RAV4
POPULAR NZ NEW SUV
2WD, Cruise Control, Bonnet Protector, VVT-i,
2362cc, Petrol, Auto, 171kms



\$12,995

2008 Honda Jazz Sport
AFFORDABLE SPORTY HATCH
Spoiler, VTEC, Driving Lights, Factory Body kit,
1500cc, Petrol, CVT, 131kms



\$7,995

2016 Holden Captiva LT
7 SEATER AWD
6 Cylinder, Roof Rails, Parking Sensors, Auto
Headlights, Daytime Running Lights, Tow Bar,
2997cc, Petrol, 6 Spd Auto, 124kms



\$15,995

2013 Mazda CX5 GSX
NZ NEW, GREAT BUY
Tow Bar, All Wheel Drive, Keyless Start, Cruise
Control, Reversing Camera, 2488cc, Petrol, Auto,
195kms



\$12,995

2007 Toyota Blade
SPORTY HATCH
Keyless entry & ignition, Spoiler, Tinted Windows,
Electric Seats, Stability Control, Driving Lights,
2369cc, Petrol, CVT, 199kms



**NOW
\$7,995**

THIS WEEK'S SPECIAL:
2021 HYUNDAI KONA 2.0 LIMITED
Daytime Running Lights, Heated Electric Leather
Seats, Lane Departure, Electric Parking Brake, Tow
Bar, HUD, Tinted Windows, 1999cc, Petrol, CVT,
29kms



\$32,995

2015 Toyota COROLLA GX
NZ NEW 6 SPD MANUAL HATCH
Cruise Control, Stability Control, Reversing Camera,
VVT-i, 1798cc, Petrol, Manual, 208kms



\$11,995

2017 Ford Fiesta SPORT
LOW KM NZ NEW HATCH
Factory Body Kit, ECOBOOST, Turbo, Driving Lights,
999cc, Petrol, Auto, 68kms



\$15,995

2022 MG Zs T ESSENCE
LATE MODEL, LOW KMS
360 Degree Cameras, Climate Control Air Con,
Heated Electric Leather Seats, Tow Bar, Turbo,
1298cc, Petrol, Auto, 14kms



\$27,995

2013 Nissan X-Trail
NZ NEW
Roof Rack, Cruise Control, Alloy Wheels, 1997cc,
Petrol, CVT, 104kms



\$12,995

2015 Ford KUGA
LOW KM NZ NEW SUV
AWD, Stability Control, Tow Bar, Turbo, Keyless
Start, 1596cc, Petrol, Auto, 53kms



\$19,995

2013 Toyota RAV4 GX
4x4, Sports Mode, Descent Mode, Tow Bar, NZ
Navigation, Roof Rails, VVT-i, 2494cc, Petrol, 6
Spd Auto, 177kms



\$16,995

2012 Toyota HIGHLANDER LTD
GREAT 7 SEATER TOW VEHICLE
4WD, Tinted Windows, 6 Cylinder, Roof rails,
Alloy Wheels, traction Control, 3456cc, petrol,
Auto, 212kms



\$16,995

VEHICLES ARRIVING DAILY - SEE ONSITE SPECIALS
VISIT MERITCARS.CO.NZ



LOCALLY OWNED & OPERATED

Ph 06 281 1925 • Chris Elliot 027 471 5972

Ph 06 757 3585 • Jamie Henry 021 556 223